



Office of Entrepreneurship and Small Business Innovation

Statutorily Required Annual Reports

FY 2021-2022





KY INNOVATION
CABINET FOR ECONOMIC DEVELOPMENT

Office of Entrepreneurship and Small Business Innovation

Annual Report for Fiscal Year 2022
July 1, 2021 to June 30, 2022

Submitted to:
Governor Andy Beshear and the Legislative Research Commission,
pursuant to KRS 154.12-278.

Submitted by:
Office of Entrepreneurship and Small Business Innovation
Kentucky Cabinet for Economic Development

Office of Entrepreneurship and Small Business Innovation

Pursuant to KRS 154-12-277, the Office of Entrepreneurship and Small Business Innovation (KY Innovation) within the Kentucky Cabinet for Economic Development (Cabinet) is responsible for various forms of entrepreneurship and small business assistance, including but not limited to (a) providing customer service and project management with small and minority businesses (b) assisting export development (c) administering the innovation assistance set forth in KRS 154.12-278 (d) introducing entrepreneurs to individual investors and to investment capital firms interested in start-up and early-stage financing, and (e) and collecting, summarizing, and disseminating information helpful to small businesses, including information on market research, federal, state, and local minority business programs, government procurement opportunities, and the availability of managerial assistance.

Overview

The Office of Entrepreneurship and Small Business Innovation carries out the broad responsibilities of managing and administering the state's comprehensive initiatives for entrepreneurs, innovative ventures, and associated research and development under the umbrella of "KY Innovation" within the Cabinet. KY Innovation and the Cabinet have focused on developing the pipeline of high-tech innovations, growth oriented businesses, and research-backed companies in Kentucky. Rapid advances in technology continue to accelerate transformations and create new opportunities in traditional business sectors. A diverse, vibrant innovation and entrepreneurship community is essential to adapting and driving advances in existing and emerging industries, as well as to supporting meaningful economic development within the Commonwealth.

In support of these efforts, over the previous two years, KY Innovation has refined the state's entrepreneurial agenda to efficiently help Kentucky business to launch and thrive wherever they are. There are several accomplishments to note. Over the past fiscal year, KY Innovation has:

- Refined our nationally-awarded, statewide collaborative approach to coordinating entrepreneurial support programs
- Developed stronger marketing platforms to help entrepreneurs quickly access the information they need
- Enhanced our financial incentive processes to promote access to capital and spur investment within Kentucky
- Established clear accountability and transparency measures for ourselves and our private partners
- Supported Kentucky's development of industry clusters in line with federally-directed research priorities
- Expanded outreach in support of underserved and diverse populations across Kentucky
- Coordinated with the Commission on Small Business Innovation and Advocacy to review new legislation impacting Kentucky businesses and develop a comprehensive resource of statewide programs that can support small businesses
- Served as a key resource in the essential economic recovery efforts related to the COVID-19 pandemic, 2021 tornado disaster in Western Kentucky, and 2022 flood disaster in Eastern Kentucky

KY Innovation continues to create new programs that fill critical needs and provide rapid growth opportunities. For example, in 2020, we launched Kentucky Commercialization Ventures (KCV), a public-private partnership among the state's public universities and community and technical colleges that supports access to commercialization and intellectual property education and resources in addition to talent development in ecosystem building. This effort further connects Kentucky's entrepreneurs with universities to turn Kentucky's best ideas into great businesses and high-paying jobs of the future. KCV has already won national recognition, including two coveted national awards from the U.S. Small Business Administration for its visionary work around building more inclusive R&D and business acceleration ecosystems. KY Innovation also redesigned the Kentucky Enterprise Fund (KEF) that invests in early-stage startup companies, with emphasis on investing in rural startups, and Kentucky's SBIR/STTR matching award program that matches federal grant dollars won by Kentucky's innovators to engage in impactful research via small business. These programs are thriving and supporting startups statewide.

To date, KY Innovation's programs have helped over 3,000 small businesses and assisted those clients with raising over \$1.5 Billion in funding. These companies have used the office's resources to generate over \$5.44 Billion in revenue and create over 12,000 jobs. Continuing our support of these startups and small businesses is critical to our economic recovery, as small businesses employ more than 40% of all employees in Kentucky. KY Innovation is proud that our economy continues to win national recognition for the opportunities it creates for Kentuckians to become business owners and hire within their communities. KY Innovation remains passionately committed to the success of entrepreneurship and small business growth in the Commonwealth. On behalf of our communities, KY Innovation expresses its sincerest gratitude to Governor Andy Beshear and the Kentucky Legislature for their continued support.

The following report summarizes the activities of KY Innovation from July 1, 2021, through June 30, 2022.

KY Innovation Hubs

KY Innovation's six regional Innovation Hubs are the hands-on catalysts for the expansive entrepreneurial and startup growth the Commonwealth seeks to cultivate. Each Hub, selected through a competitive RFP process, leverages local partnerships and works with other organizations, including universities, colleges, and economic development groups to assist entrepreneurs in many different industries and different stages of development. Partners include successful entrepreneurs, angels and venture capitalists, private sector companies, non-profits, local governments, and other organizations with a role to play in fostering dynamic, resilient regional economies, job growth, and globally competitive communities. Entrepreneurial ecosystems that cluster and integrate regional assets and expertise within a larger statewide collaboration are proven to maximize each area's advantages and tailor programming to their regional needs, while also invigorating the state's overall entrepreneurial ecosystem.

The KY Innovation Hubs throughout the Commonwealth represent all 120 counties. The regions include Eastern Kentucky/Appalachia (Pikeville), Greater Lexington, Greater Louisville, Northern Kentucky (Covington), Southwest Kentucky (Bowling Green), and Western Kentucky (Paducah). Regions with large geographic footprints have multiple offices and partners throughout the region. KY Innovation Hubs and their respective contractual and collaborative partners strive to increase the likelihood that high-growth, knowledge-based businesses can be launched in Kentucky and obtain both public and private investments to develop and grow.

The Hubs have served as a primary lifeline, virtual convener, and service provider for entrepreneurs throughout the global COVID-19 pandemic, showcasing their adaptability and proactive, responsive nature. Significant work continued in 2021 to identify state and local priorities, while also establishing a set of metrics that accurately assesses the health and progress of the ecosystem. KY Innovation strives to ensure equitable resources are available for all markets, so Kentucky businesses can be launched and thrive where they are.

The Hubs were able to increase impact in several important areas, including the number of startups created, in FY2022.

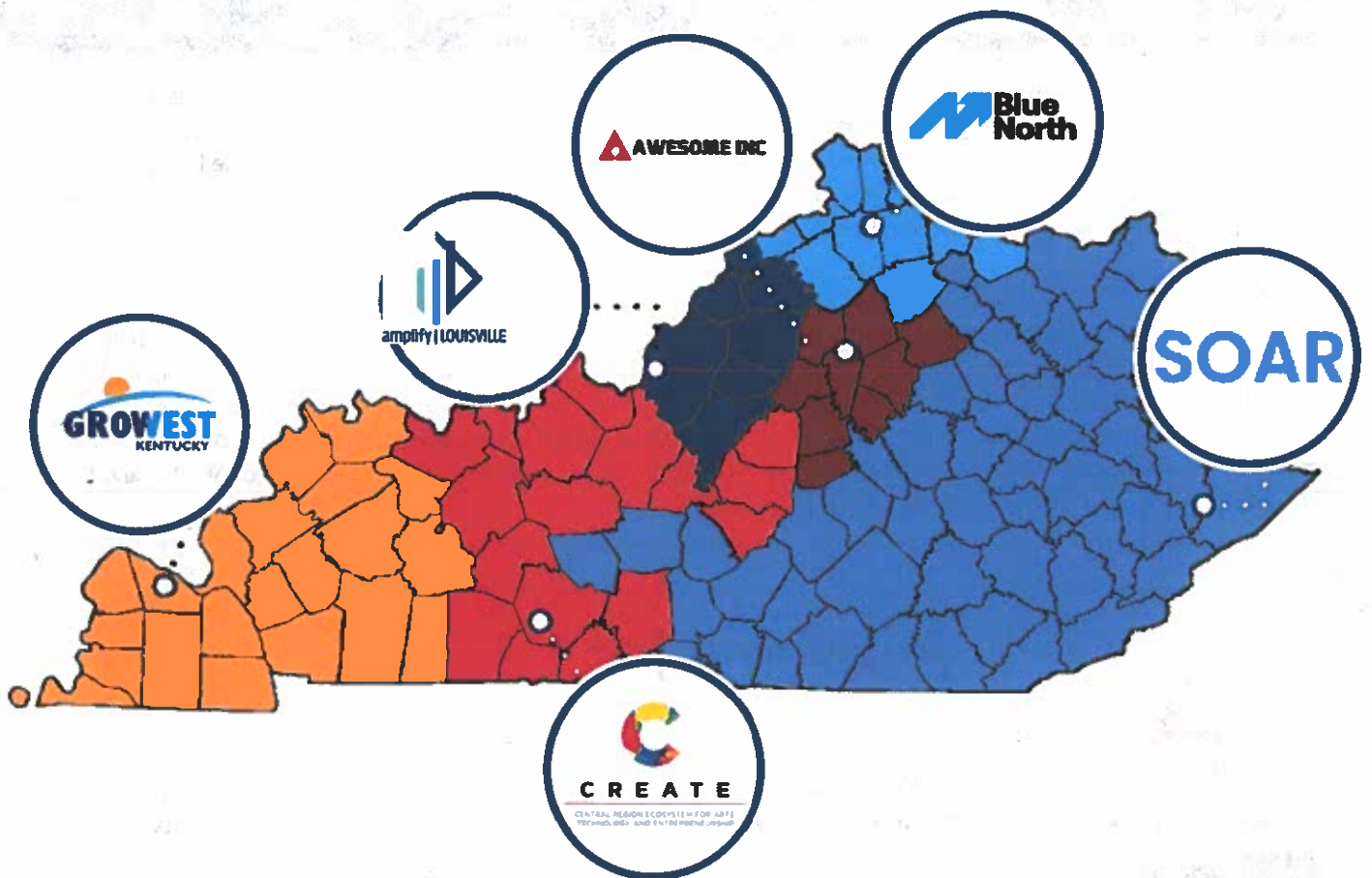


KY Innovation Hubs are managed in partnership with the Kentucky Science and Technology Corporation (KSTC), a science and technology nonprofit with over 30 years of experience leading STEM programs. KSTC has long maintained partnerships through Kentucky, managed the KY Innovation Network for nearly twenty years, and is aligned with statutory requirements for providers of such services. With respect to the Hubs, KSTC currently handles various infrastructure, database, and support functions along with managing various events and marketing for Kentucky's entrepreneurial and commercialization efforts.

Activity Highlights for Reporting

Number of Startups Created	Number of New Jobs	Number of Startup Meetings	Number of Events	Number of Event Attendees	Private Capital Raised by Startup
172	911	3,556	500	14,444	\$190 million

KY Innovation Hubs support all 120 counties across Kentucky



KY Innovation, in partnership with KSTC, hosts monthly entrepreneurship support organization (ESO) calls and quarterly impact update webinars with statewide attendance. The ESO calls are open to any KY Innovation hub or small business support organizations in the Commonwealth. The KY Innovation hubs present their most recent results on the quarterly KY Innovation hub impact call. Each of these meetings are accessible to the public via posts on YouTube.



Amplify Louisville

Bullitt County
Henry County
Jefferson County

Nelson County
Oldham County
Shelby County

Spencer County
Trimble County

amplify | LOUISVILLE

Over the past fiscal year, Amplify Louisville, Inc. supported 19 founders with 1:1 coaching, mentoring, and support. The Six of these founders were able to join a boot camp or accelerator with Amplify's support and raised over \$800,000 in funding for their businesses. Hub also created an entrepreneur-in-residence program to support historically marginalized founders. In addition to direct support of founders, Amplify focused on supercharging those organizations focused on supporting historically marginalized founders, such as Network N' Chill, Network of Entrepreneurial Women, Diversity Entrepreneurship Summit, Ideathon (a program within Derby Diversity Business Summit), and Queer KY.

Amplify has really helped me amplify my network. Before starting Yornest, I was a junior in college with no idea about startups. I just knew that I wanted to solve a problem that deeply resonated with me and I wanted to do something about it. Once I discovered Amplify via Larry Horn, I was blown away by the vast networks and resources they provide to the fast-growing startup community in Louisville. I got to work with an incredible network of individuals such as their entrepreneur-in-residence, Kela Ivonye, Lisa Bajorinas and many more that have helped shape me into becoming a better entrepreneur."

-Michael Brizendine, Yornest, Inc.

"In January of 2021, my wife and I had an idea. In January 2022, we have an ed-tech startup with a full team to help us build. None of this would have been possible without both of Amplify's entrepreneurs in residence Kela Ivonye and Natalia Bishop. Kela walked us through the process of turning an idea into a startup and brought energy and outside-the-box thinking to help us get in the best position possible to be a stand-alone start-up. Natalia offered her expertise with building a platform and even connected us with her UX designers which we are now in development with. We are extremely grateful for Amplify and the resources they offer and we hope to continue this partnership!"

- Sean & Nikki, Pep Rally



AWESOME INC

Awesome Inc.

Anderson County
Bourbon County
Boyle County

Fayette County
Franklin County
Jessamine County

Mercer County
Scott County
Woodford County

Awesome Inc., located in Lexington as well as its partners Launch Blue and BaseHere, served 508 startups and referred 351 founders to potential partners over the last fiscal year. The Lexington-based Hub assisted entrepreneurs and built upon investor and economic optimism. The team helped startups and founders in communities to navigate the uncertainties associated with COVID-19, and continues to help its region thrive. Awesome Inc. remains committed to its entrepreneurial ecosystem and assisting its region with future challenges as they introduce themselves.

"The Awesome Inc Fellowship and its coworking space have provided Synaptex with critical startup space and resources across Kentucky. Being a part of the Awesome Inc community has been integral to our early success as a startup. If you are a startup in Kentucky, you should reach out and get involved."

- Doug Van Pelt, Synaptex



Blue North

Boone County
 Bracken County
 Campbell County
 Carroll County

Gallatin County
 Grant County
 Harrison County
 Kenton County

Mason County
 Owen County
 Pendleton County

Blue North, located in Covington, appointed Dave Knox as its Executive Director in June of the Fiscal Year 2022. Under Knox's leadership, the Hub focused on supporting underserved entrepreneurs through collaborations with Aviatra Accelerators for women entrepreneurship, MORTAR Covington for diverse entrepreneurs, and Northern Kentucky University for student entrepreneurs. Through these efforts, Blue North served over 152 startups in the Northern Kentucky region.

"Blue North has provided us with resources, mentorship, and marketing opportunities that have already generated growth within the company. Working with their team has given me meaningful connections that led to us receiving startup capital from several Kentucky investors. That funding gave us the ability to expand our team by allowing me to work full time and hire a full-time employee."

- Isaiah Kelly, Smoove Creations

CREATE



CREATE

CENTRAL REGION ECOSYSTEM FOR ARTS
 TECHNOLOGY, AND ENTREPRENEURSHIP

Allen County
 Barren County
 Breckinridge County
 Butler County
 Grayson County
 Hardin County

LaRue County
 Logan County
 Marion County
 Marion County
 Meade County
 Simpson County

Taylor County
 Warren County
 Washington County
 Daviess County
 Hancock County
 Ohio County

CREATE (the Central Region Ecosystem for Arts, Technology, and Entrepreneurship), located in Bowling Green and Elizabethtown, launched its new organizational branding and soft launched its new 30,000-square foot Collaborative SmartSpace during Fiscal Year 2022. The Collaborative had 50 pilot members, operated with a membership model, and provided a venue where creative people who work in the region can network, develop new concepts, and find talent. In addition, CREATE supported 112 startups and assisted in the formation of 17 new companies, partly through its 75,000-square-foot physical accelerator space in Bowling Green. The Hub also launched the website for its new CO/CREATE Talent Database, which will identify and connect professionals to local career opportunities.

"All the new programs that CREATE has launched this year cement why I continue to build and scale businesses in Bowling Green in general, and at their Innovation Campus in particular. To stay on the cutting edge, we need to be where the most innovative thinking, research, and brainstorming is happening, and I couldn't imagine a better spot than the Innovation Campus."

-Jeremy Jacobs, LobbyFox

"As a serial entrepreneur, I am very excited about the Innovation Campus at WKU and the resources CREATE continues to provide me to create and grow businesses."

-Jake Petrovic, NovoHoldings restaurant group

* The Cabinet's contract partner, Central Region Innovation and Commercialization Center (CRICC), changed their branding to CREATE in 2022. The contractual partner during the reporting period was CRICC.

GroWest



Ballard County
Caldwell County
Calloway County
Carlisle County
Christian County
Crittenden County
Fulton County

Graves County
Henderson County
Hickman County
Hopkins County
Livingston County
Lyon County
Marshall County

McCracken County
McLean County
Muhlenberg County
Todd County
Trigg County
Union County
Webster County

GroWest, headquartered in Paducah, opened Sprocket - a 10,000 square foot coworking facility - in November of 2021. The Hub's mission is to facilitate the emergence of the digital economy in Western Kentucky and Sprocket is designed to better prepare the community for that coming shift. Since its inception, Sprocket has proven to be a catalyst for startup attraction, creation, and growth. Currently, the coworking space is home to 20 young companies that have collectively created 17 new jobs. GroWest saw more than 900 attendees at its networking, special, and software training events. Moreover, some software trainees received direct work experiences as a result (3 internships and 5 new jobs).

"Sprocket has been a great catalyst for growth for PreventScripts. The team at Sprocket has helped us access new investors, partners and specifically talent to grow our team. We have just expanded our marketing and sales teams with Sprocket's help. Having CEOs from other software companies close by helps us with advice on how to grow our software platform, especially with regard to strategically building, scaling and protecting our technology. If you are looking to build a scalable software company in Paducah, come to Sprocket."

- Natalie Davis, MD, PreventScripts

"When Ujoin moved to Western Kentucky, GroWest immediately plugged us into the startup ecosystem locally and statewide. Since then, we've tapped into the exceptional resources that GroWest and the state provide. We're excited to both grow our company in Kentucky and to give back to the startup ecosystem here."

- Kory Payne, uJoin



SOAR

Shaping Our Appalachian Region (SOAR)

- | | | |
|-----------------------------|------------------------------|-----------------------------|
| Adair County | Hart County | Morgan County |
| Bath County | Jackson County | Nicholas County |
| Bell County | Johnson County | Owsley County |
| Boyd County | Knott County | Perry County |
| Breathitt County | Knox County | Pike County |
| Carter County | Laurel County | Powell County |
| Casey County | Lawrence County | Pulaski County |
| Clay County | Lee County | Robertson County |
| Clark County | Leslie County Letcher County | Rockcastle County |
| Clinton County | Lewis County | Rowan County |
| Cumberland County | Lincoln County | Russell County |
| Edmonson County | Madison County | Wayne County |
| Elliott County | Magoffin County | Whitley County Wolfe County |
| Estill County | Martin County | |
| Fleming County | McCreary County | |
| Floyd County | Menifee County | |
| Garrard County | Metcalfe County | |
| Green County Greenup County | Monroe County | |
| Harlan County | Montgomery County | |

SOAR, located in Pikeville, launched its Complete Guide to Entrepreneurship in Eastern Kentucky and received a total of 338 downloads. This tool provided important information to those interested in entrepreneurship, and created a linkage to startups and existing businesses. Those relationships revealed entrepreneurship needs that were not being addressed by private and public entities. SOAR then created a suite of six custom-tailored Direct Services to fill those identified gaps. The services include assistance with One Page Website Development, E-Commerce, Systems for Success, One Page Business Plan, Google Services, and Digital Media.

"SOAR has been incredibly helpful and supportive from the start of our new business. They have worked to make needed connections, and introductions, and provided knowledgeable feedback as we've grown. Now as we continue to expand, they are supporting us through their suite of direct services."

-Shadow Skaggs, Murrays Autoworx

"There is absolutely no doubt in my mind that without SOAR, I would not have been able to grow my business on the scale that it has. Although passion was plentiful, having access to those like Sabrina and Kristin made it possible to build upon the information and experience they have shared with me; which has allowed The Cookie Yoda, LLC to grow beyond a home baker to a profitable and successful small commercial baking company. From their willingness to answer many questions to the redesign of an existing website, the SOAR team has been a wonderful resource that has reduced the amount of stress and allowed the focus to be where it's needed most...my customers."

-Lori Lenoir-White, The Cookie Yoda



R&D and Commercialization

SBIR-STTR Research Commercialization Program

The Small Business Innovation Research (SBIR) and Small Business Technology Transfer (STTR) program is the primary way in which the federal government funds commercialization efforts by small businesses and translational innovators across the country. The mission of the SBIR/STTR program is to support scientific excellence and technological innovation through the investment of federal research funds in critical American priorities to build a strong national economy. Through a competitive awards-based program, SBIR and STTR grants enable small businesses to explore their technological potential and provide incentives to profit from commercialization. To learn more about the federal SBIR-STTR program, please visit sbir.gov.

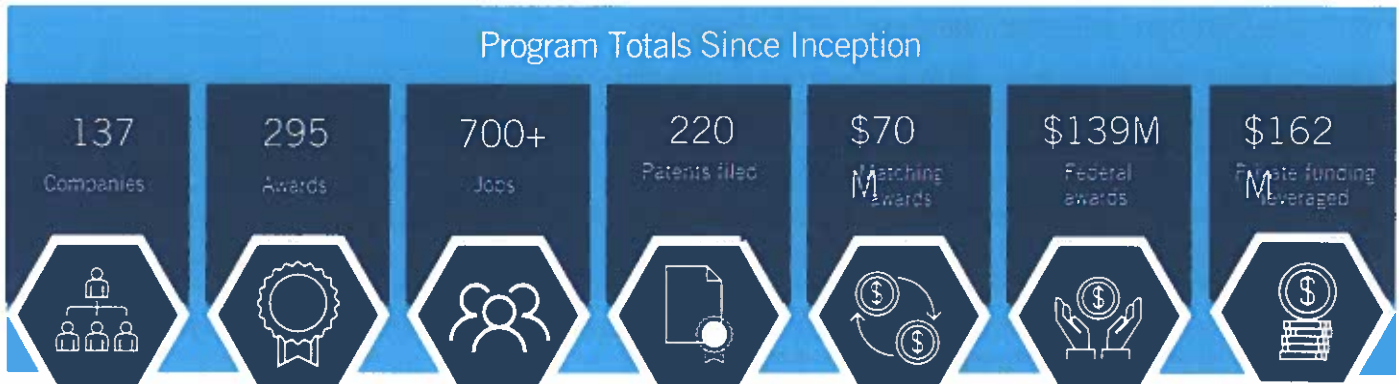
Since 2006, Kentucky has supported various programs to support Kentuckians in applying for such funds, including the creation of an SBIR/STTR matching fund program that provides non-dilutive grant funding to awardees currently in or willing to relocate to Kentucky. KY Innovation also enables partner programs that provide early-stage support to companies that are considering applying for SBIR/STTR funding, develop broad relationships with federal agencies, and seek out additional solutions to continuously support research commercialization.

The Kentucky SBIR-STTR Matching Funds Program

This nationally recognized program, the most comprehensive of its kind in the nation, matches both Phase I and Phase II federal awards received by Kentucky's small, high-tech businesses or those willing to relocate to Kentucky. During the reporting period, the program matched Phase I federal awards up to \$100,000 to support the exploration of the technical merit or feasibility of an idea or technology and up to \$150,000 for Phase II federal awards, which supports full-scale R&D. The number of Kentucky firms applying for and receiving federal awards has increased since Kentucky began the matching program. Since 2007, Kentucky has leveraged \$1.98 in federal awards for every \$1 provided in state matching awards. The 42 companies that relocated to Kentucky have attracted federal funds from six federal agencies for a total of \$46.3 million – funding that would have gone to other states if not for Kentucky's program.

Round 37	Solicitation Period March-April 2021	Number of Applications 19	Number of Awards 9
Matching Funds Awarded \$900k	Federal Grant Funding Leveraged \$4.77M	Private Investment Leveraged \$2.13M	Jobs & Average Salary 9 jobs, \$97k avg. salary

Round 38	Solicitation Period Sept-Oct 2021	Number of Applications 21	Number of Awards 9
Matching Funds Awarded \$900k	Federal Grant Funding Leveraged \$5.12M	Private Investment Leveraged \$6.36M	Jobs & Average Salary Data available late 2022



SEE APPENDIX A FOR SBIR-STTR MATCHING FUNDS RECIPIENTS

Improved Success in Obtaining Federal SBIR-STTR Awards

Since 2006, Kentucky has provided various forms of free assistance to companies and individuals in Kentucky to aid them in compiling the information necessary to apply for SBIR/STTR grants. In 2018, that program was formalized through the Kentucky Innovation Investment Program (KIIP). This program leverages existing SBIR/STTR support and matching funds and invests even more in expert consulting services to increase the number of SBIR/STTR awards in Kentucky.

During the reporting period, through the KIIP Program and partnership with KSTC's Kentucky Science and Engineering Foundation (KSEF), 79 companies were assisted in grant writing assistance and over 228 companies were assisted through educational, outreach, and training programs - all without expense to the company. During the same reporting period, SBA SBIR/STTR program reported 26 Kentucky companies received 32 federal SBIR/STTR awards, totaling \$13.8 million.

SBIR-STTR Accelerator Programs

KY Innovation funded additional support resources through targeted SBIR/STTR accelerators that helped prepare companies and inventors for applications to specific agencies. For example, the Department of Defense (DoD) is one of the largest federal funders for the SBIR/STTR program, and so the Cabinet supported a partnership between KSTC and OK Catalyst to operate two DoD SBIR/STTR proposal accelerator cohorts. KY Innovation and KSEF also added proposal accelerators to help Kentucky companies navigate the unique requirements of NASA and in the area of clean energy. During the reporting period, 36 companies enrolled and 7 submitted proposals. KSEF also facilitated 40 additional proposals with 6 federal agencies by issuing 25 micro-awards averaging \$4,912, and this support resulted in 7 federal awards.

Kentucky Commercialization Ventures (KCV) Program

Kentucky Commercialization Ventures (KCV) was launched in 2020 through the KSEF, in partnership with KY Innovation, KSTC, University of Kentucky, the University of Louisville, and the Kentucky Council on Postsecondary Education. The goal of the program is to develop a sustainable startup infrastructure and innovation culture in higher education, which is fundamental to a knowledge-based economy, while also stimulating talent attraction in the innovation and startup communities. KCV is a public-private partnership that unites Kentucky's public higher education institutions to advance innovation, intellectual property, and collaborative commercialization statewide through its service to 22 regional universities and community and technical colleges across the Commonwealth. KCV is currently administered by KSTC.

KCV served the following valued partner institutions in Fiscal Year 2022:



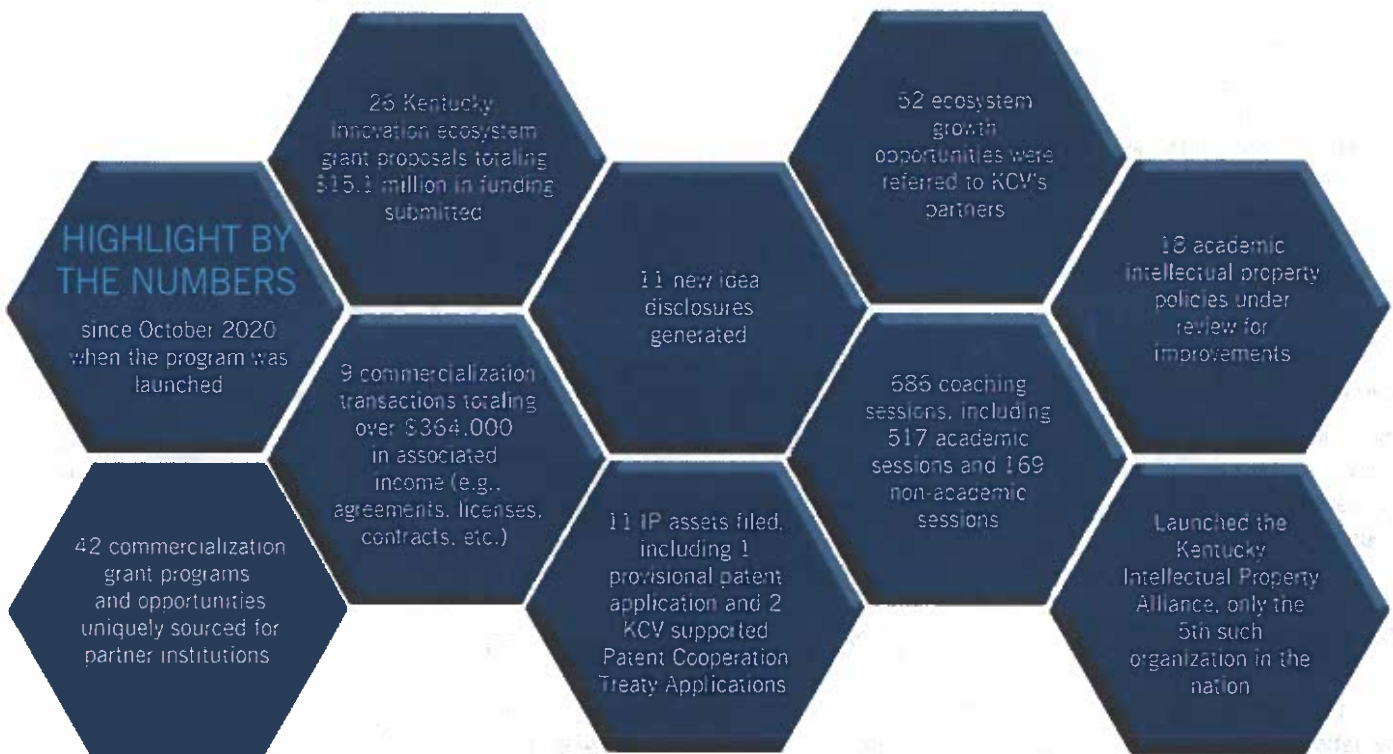
The KCV partnership is driven by the vision that Kentucky ideas will change and improve lives. KCV works alongside its partners to expand access to dedicated technology transfer and new venture development services statewide to the benefit of regional universities and colleges that lack these resources. The initiative is twice nationally recognized as an equitable, shared service center model that sparks organic growth in Kentucky's technology sectors, contributes to an efficient product development infrastructure, and keeps Kentucky's best ideas protected to maximize their impact to Kentucky's economic growth. In its higher education community of over 165,000 faculty, staff, and students, KCV supports more Kentuckians to participate in innovation and startup creation than ever before.

KCV's inaugural year was a year marked with uncertainty as the COVID-19 pandemic began and caused all of Kentucky's public universities and colleges to move to a virtual environment. Despite this ongoing interruption and its sweeping impact on the economic health of Kentucky, KCV persevered to support academic innovators virtually while prioritizing attraction of more innovation investment and notoriety to the state. In addition to several KCV innovator teams winning awards, the KCV initiative also won the 2021 Lab-to-Market Inclusive Innovation Ecosystem Award as well as the 2021 Growth Accelerator Fund Competition Award from the U.S. Small Business Association (SBA). KCV has also been featured by Translational Science 2021, the 2021 HHS Small Business Program Conference, VentureWell's OPEN 2021 conference, and the global 2021 AUTM Annual Conference among others.

In Fiscal Year 2022, KCV developed and launched the KCV Innovation Fellowship to provide an experiential learning program focused on commercialization. This program was designed to equip the next generation of ecosystem builders statewide with the practical skills necessary to lead the translation of Kentucky's most innovative solutions into the real-world market. Seven Fellows from several regional institutions graduated from the inaugural cohort in April 2022.

KCV also launched the KCV IMPACT COMPETITION to challenge innovators from regional institutions to create solutions relevant to the improvement of the social, health, and/or economic condition of Kentucky. Six innovators from five different regional institutions were awarded up to \$25,000 toward the further development of their ideas.

KCV's GOAL program (Growth, Opportunity, and Learning) sponsored multiple regional institutions (including state universities and community and technical colleges) to gain access to and participate in nationally recognized programs for innovation excellence. Over the course of the year, this program provided ten opportunities for regional institutions, including Launch Blue, UAccel, LaunchIt, AUTM Annual, and UIDP Mission in Motion.



Please note: A significant amount of time is required to realize the results of Kentucky innovation ecosystem grant proposals, license deals, and other commercialization transactions in maturity. The commercialization transactions number will continuously increase over time.

Selected Success Stories

Six teams from KCV partner institutions were awarded a total of \$229,808 through the Kentucky Network for Innovation & Commercialization (KYNETIC) grant program Small Business Administration (SBA).

KCV was awarded \$50,000 in the U.S. Small Business Administration's Growth Accelerator Fund Competition which was announced in conjunction with the Small Business Innovation Research (SBIR) Catalyst competition, a new component aimed at spurring investment in underrepresented communities.

Eastern Kentucky University received its first income from a KCV-supported license agreement to a faculty-led startup company, Eastern Scientific. Formed in 2020, Eastern Scientific licensed rights to EKV IP in November 2021 and has already begun making commercial sales of its product, leading to the remittance of funds back to the university.

Kentucky Community & Technical College System filed the first-ever patent application from a Kentucky community college with support from KCV. The provisional patent was for innovations in 3D printing developed at Somerset Community College.

The Kentucky Intellectual Property Alliance (KYIPA)

Additionally, KCV launched the Kentucky Intellectual Property Alliance (KYIPA) to foster an effective ecosystem and marketplace to facilitate the creation, protection, and advancement of intellectual property in Kentucky by serving as statewide connecting organization. KYIPA is administered and fiscally sponsored by KSTC.

Throughout the past year, KCV has fostered partnerships with a wide range of organizations:

- Midwest U.S. Patent and Trademark Office
- Inventors Network KY
- Invent Together
- World Intellectual Property Organization
- Cameron IP

In its first year, KYIPA:

- 81 members join
- 5 virtual events
- 219 event registrations
- 50 legal consultations

Kentucky is looking at intellectual property protection through a modern economic development lens with KYIPA. For example, KYIPA's involvement in the entrepreneurial ecosystem has led to questions surrounding intellectual property to be included in the Kentucky's future Bar exams as well as community engagement to advocate for more continuing education on intellectual property matters.



Kentucky Network for Innovation and Commercialization (KYNETIC)

In 2019, the National Institutes of Health (NIH) selected five new hubs to be part of the national Research Evaluation and Commercialization Hub (REACH) network. The Kentucky Network for Innovation and Commercialization (KYNETIC), with leadership of all of Kentucky's public universities and community and technical colleges was chosen to receive one of these prestigious REACH awards. This is a unique partnership administered by University of Kentucky (UK) and the University of Louisville (UofL), with support from Kentucky Commercialization Ventures, is a mechanism for equitable access to capital and resources for ideas that improve human health.



The purpose of the program is to help identify and bring to market technologies that could benefit human and/or public health, as well as to establish a permanent culture for commercializing ideas and research emanating from Kentucky's higher education institutions. Projects are eligible for grants of up to \$33,333 per six-month cycle and up to \$200,000 total throughout the life of the program, but all projects must compete for new or continued funding each cycle.

During the reporting period, KYNETIC adopted new processes and guidelines to guarantee that innovators from the regional universities and community and technical colleges had more opportunity to participate. The program now distributes three awards each cycle to UK and UofL respectively (as Kentucky's designated research universities), while also distributing two awards each cycle to the regionals and community and technical colleges. The program also increased efforts in outreach and education related to its member institutions through a series of trainings, informational sessions, and fireside chats offered both live and virtually.

Over two cycles in Fiscal Year 2022, KYNETIC received 32 and 38 pre-applications, respectively. Six projects were funded in Cycle 4 and nine projects were funded in Cycle 5. A few of the developments related to those recipients of funding include the following:

- A Western Kentucky University team is creating a virtual reality platform for increasing awareness of bias in child welfare decision-making
- An Eastern Kentucky University team is developing a diagnostic and therapeutic filed for patent protection and formed a startup

- A Northern Kentucky University team is developing a therapeutic device to recognize trained thoughts and wirelessly control components of a prosthetic arm
- A University of Louisville team is developing a postural control system to prevent or slow scoliosis progression in kids with spinal cord injury
- A University of Louisville team is developing a surgical device that measures bone quality in real-time to assist surgeons in selecting optimal instrumentation or bone augmentation strategies
- A University of Kentucky team is developing a novel method for the treatment of Methamphetamine Use Disorder
- A University of Kentucky team is developing a novel biologic approach for treating ovarian cancer

Kentucky Established Program to Stimulate Competitive Research (KY EPSCoR)

The purpose of the federal EPSCoR program is to help states become competitive for federal research dollars by building research infrastructure, including faculty, students and facilities. KY Innovation provides the 20% required state match for KY EPSCoR, which currently totals \$1.2 million per year. Kentucky currently has active grants with both the National Science Foundation (NSF) and NASA EPSCoR programs. The EPSCoR programs help states and jurisdictions to build infrastructure that makes Kentucky competitive and more likely to receive its fair share of federal research dollars.

KY EPSCoR is governed by a Statewide Steering Committee, as required by the federal program, which oversees budget and research decisions. Furthermore, the Committee ensures government, industry and university collaboration. Membership is comprised of university administrators, research faculty and private sector individuals. The Statewide Committee has oversight authority over KY NSF EPSCoR and NASA EPSCoR programs regarding which grant proposals go forward for consideration for funding by the respective agencies. Department of Energy (DOE) EPSCoR and DOD EPSCoR programs each have a coordinator to serve as a communication link for funding opportunities through EPSCoR, and NIH/ Institutional Development Awards (IDeA) do not require matching, so there is an EPSCoR staff available for coordination purposes. Each of the program directors oversee subcommittees with university representatives to oversee grants from each federal agency.

KY EPSCoR researchers leveraged state matching funds to obtain over \$36.2 million in follow on funding. NASA grants have yielded over a 6:1 return on investment for state matching funds since 2018, which represents a 25% increase. To date, these projects have created 261 Kentucky jobs. Historically, the NSF initiated EPSCoR and other agencies later joined; successes from the NASA EPSCoR program include seed funding that led to the development of Space Tango. NSF EPSCoR has also provided facilities seed funding for a Multiscale Nano-manufacturing node at UofL and UK, one of 16 nationally recognized nodes that help industry.

EPSCoR recognizes that students need access to scientific expertise in every state to prepare for jobs of the future. Overall 1,400 KY college students have participated in NASA Kentucky team research projects since 2010). NSF and NASA require research focused in areas tied to an economic development plan.

KY NSF EPSCoR –The Track I grant (Kentucky Advanced Manufacturing Partnership for Enhance Robotics) used \$573,739 state dollars to match \$4 million in federal dollars to conduct research on materials and robotics in support of manufacturing consistent with a statewide economic strategy. This is a five-year award with \$4 million of federal dollars per year. (Return on investment: 1 state: 7 federal). With follow-on funding, this becomes \$1:\$17. Additionally, state researchers have received Track II awards totaling \$11,826,860.

KY NASA EPSCoR – The Kentucky Space Grant Consortium received \$300,000 in state match for \$860,000 in Federal Funding (ROI 1:3). NASA EPSCoR Research Area and Research Infrastructure Development programs (RID) received \$250,000 in state match for \$950,000 federal (ROI 1:4). These programs were also matched by \$630,000 in-kind from Kentucky universities and science centers. Over \$10,000,000 in non-EPSCoR follow-on funding to support a NASA Space Technology Research Institute, five NASA Early Stage Innovation Awards, two NASA University Leadership Institutes and a mid-size competitive RI-1 grant have recently been awarded. The Kentucky Re-entry and Universal Payload System was recently flown from the International Space Station, resulting in the first university-built entry capsule to successfully transit a planetary atmosphere. It was also the first time a university flew a hypersonic vehicle, and the first time a 3D-printed heat shield flew on an entry mission. NASA touted these accomplishments at recent national meetings.

KY DOE EPSCoR – Received \$75,000 in state match for \$676,855 in three federal grants (immediate 1:9.02 ROI), including two related to advanced battery development.. Currently, two new grant proposals are pending.

DoD EPSCoR and NIH/Institutional Development Award (IDeA) don't require a state match. The NIH/IDeA program has made Kentucky the top EPSCoR program in federal funding among EPSCoR jurisdictions. They had many research programs successfully conducted during the Covid-19 pandemic.

Program Historical ROI – 1,650 jobs created, 31 companies formed or advanced from EPSCoR generated knowledge, 21 research centers formed, \$26M in research equipment.

Funding and High-Tech Business

Kentucky Enterprise Fund Program

The Kentucky Enterprise Fund Program - managed by Keyhorse Capital, the investment arm of KSTC - invests in and provides other resources to seed and early-stage companies to build strong technology-based companies in Kentucky.



A core part of the Kentucky Enterprise Fund Program is the Kentucky Enterprise Fund (KEF), which invests in seed and early-stage companies developing products and/or services targeting the life sciences, IT/Software, materials and manufacturing, environment and energy markets, and other early-stage high growth and scalable businesses. The programs function in accordance with the guidelines provided in the Kentucky Innovation Act. Those investments (K.R.S. §164.6021) are summarized as follows:

- Grants and funding of up to \$50,000 for companies exploring the feasibility of technology commercialization or projects related to feasibility studies, such as incubator and accelerator programs;
- Funding of up to \$250,000 for companies in the concept development phase of technology commercialization; and
- Funding of up to \$500,000 for companies advancing and promoting the program goals

Applicants to KEF undergo a thorough due diligence process that includes research and analysis of the applicant's management team, technology, product/service, target market, business model, financials, competitive advantages, and competitive barriers.

During the reporting period, KEF committed over \$4.7 million in awards to 45 early-stage companies in Kentucky from a pool of 137 applications. Of those awards, investments in 38 companies have been completed to date, bringing the KEF portfolio to 304 investments in 179 companies that have generated over \$1.5 billion in private co-investments and private or public follow-on investments. To date, counting investments and other grants made, KEF has provided over \$47 million to companies. As demonstrated by the below graphic, the number of potentially high-growth ventures seeking critical early-stage funding continues to far outpace KSTC's funding budget for such programs.

Applications and Awards by Fiscal Year					
	FY02-19	FY20	FY21	FY22	TOTAL
Applications Reviewed	1762	29	54	137	1982
Funds Requested	\$ 155,919,921	\$ 6,490,000	\$ 14,957,000	\$ 35,343,250	\$ 212,710,171
Number of Awards	670	8	32	49	760
Amount of Awards	\$ 49,370,441	\$ 1,000,000	\$ 4,675,000	\$ 4,728,250	\$ 59,773,691

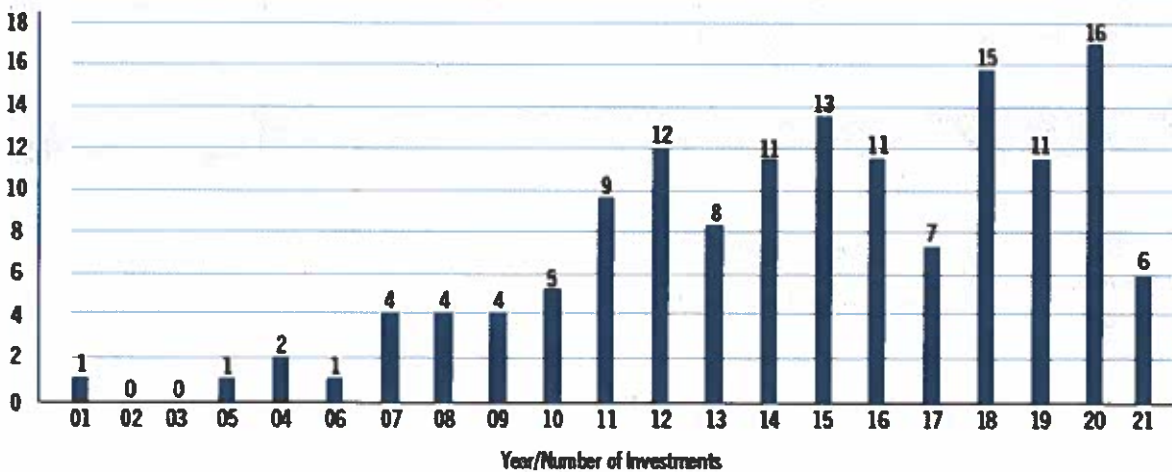
SEE APPENDIX B FOR KEF PORTFOLIO INFORMATION

Commonwealth Seed Capital (CSC)

Commonwealth Seed Capital, LLC (CSC) was established by the Kentucky Economic Development Partnership Board and serves an independent, non-profit fund that makes investments in early-stage Kentucky business entities as well as other investment funds that do the same to facilitate the commercialization of innovative ideas and technologies. Over the past year, CSC has made strides to be as transparent as possible to responsibly operate as a non-government entity overseen by the state. CSC invests in companies that have a significant Kentucky presence and the prospect for substantial growth. All CSC results listed herein are for calendar year 2021.



CSC Direct Company Investments by Year



[SEE APPENDIX C FOR CSC PORTFOLIO INFORMATION](#)

Kentucky New Energy Ventures Fund

The Kentucky New Energy Ventures Fund (KNEV) was included in House Bill 1 of the Extraordinary Session of the 2007 Kentucky General Assembly for the purpose of enabling Kentucky-based companies to undertake research, development, and commercialization in the field of alternative fuels and renewable energy. The \$5 million KNEV fund, since 2008, has funded 23 grants and 8 investments awarded to companies for a total of \$3.2 million in funding. No awards were issued during the reporting period.

High-Tech Pool Program

The High-Tech Pool Program (HTP), administered by KY Innovation, has used funds since January 2003 to assist companies and projects throughout the Commonwealth that work to support technology-based companies. All funding must be approved by the Kentucky Economic Development Finance Authority (KEDFA). No awards were issued during the reporting period.

[SEE APPENDIX D FOR HISTORICAL INFORMATION ABOUT HTP RECIPIENTS](#)

Kentucky Angel Investment Act

The Kentucky Angel Investment Tax Credit (KAITC) program began in January 2015. Subject to a statutory limit of \$3,000,000 per calendar year, the program provides up to \$200,000 in non-refundable income tax credits to qualified individual investors. The purpose of this program is to encourage investments in Kentucky small businesses, create additional jobs, and promote the development of new products and technologies.

The Cabinet reviews the eligibility of small businesses, investors, and their related investments. Qualified Small Businesses must be engaged in Bioscience, Environmental and energy technology, Health and human development, Information technology and communications, Materials science and advanced manufacturing, or Other new economy knowledge based activity. Qualified individual investors making qualified investments in qualified small businesses may be eligible for a tax credit of up to 40 percent of their investment in counties with high unemployment rates, or enhanced counties, and 25 percent in all other counties.

Applications were not accepted during calendar year 2020 pursuant to statutory changes. Following the legislative re-enactment of the program, KY Innovation resumed processing KAITC applications for Qualified Small Businesses, Qualified Investors, and Qualified Investments received on or after January 4, 2021.

FY21 Kentucky Angel Investment Tax Credit

\$4,519,545 Projected Angel Investment	\$4,344,560 Actual Angel Investment	\$1,133,261 Projected Tax Credit	\$1,089,474 Actual Angel Credit
--	--	-------------------------------------	------------------------------------

[SEE APPENDIX E FOR DETAILS ABOUT KAITC RECIPIENTS](#)

Small Business Incentives and Development

Kentucky Small Business Tax Credit (KSBTC) Program

The Kentucky Small Business Tax Credit (KSBTC) program allows eligible small businesses paying taxes imposed by KRS 141.020 (income tax on individuals), KRS 141.040 (corporation income tax), or KRS 141.0401 (limited liability entity tax) to apply for a Kentucky state income tax credit. Subject to a statutory limit of \$3,000,000 per state fiscal year, this program provides a non-refundable state income tax credit for small businesses that create and fill one or more eligible positions and invest \$5,000 or more in qualifying equipment or technology.

Applicants are eligible to receive a tax credit in an amount not to exceed the lesser of 1) \$3,500 per eligible position; or 2) the total dollar amount invested in qualifying equipment or technology. Applicants are also subject to a \$25,000 maximum tax credit cap per applicant for each calendar year. Since 2011, the KSBTC program has authorized \$11,556,914 of tax incentives for 789 recipients, with 3,434 estimated new jobs. During the reporting period, \$1,062,400 of tax incentives for 104 recipients, with 308 new jobs, were authorized.

Authorized KSBTC Program Totals



[SEE APPENDIX F FOR KSBTC RECIPIENTS](#)

Kentucky Small Business Credit Initiative (KSBCI)

Through the Small Business Jobs Act of 2010, the Cabinet applied for and received approval for \$15.5 million to create the Kentucky Small Business Credit Initiative (KSBCI). In April of 2017, KEDFA authorized an additional \$5 million of bond funds from the KEDFA loan pool to fund projects through the KSBCI program. KSBCI includes three distinct credit enhancement programs designed to generate jobs and increase the availability of credit to small businesses by reducing the risk participating lenders, credit unions, and community development financial institutions assume. KSBCI leverages funding from these private lenders to help finance creditworthy small businesses that would typically fall just outside a lender's normal underwriting standards.



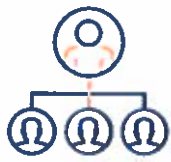
Section 3301 of the American Rescue Plan Act of 2021 reauthorized the State Small Business Credit Initiative, providing \$10 Billion to implement the second round of this program, with emphasis on access to capital for socially and economically disadvantaged communities. The U.S. Department of the Treasury (Treasury) will allocate formula and incentive-based funding to States, Territories, Washington D.C., and Tribal governments for small business financing programs. In 2021, the Cabinet submitted its application to access and deploy Kentucky's anticipated allotment of \$117 Million in access to capital funding.

[SEE APPENDIX G FOR KSBCI RECIPIENTS](#)

Kentucky Procurement Technical Assistance Center (KYPTAC)

Kentucky Procurement Technical Assistance Center (KYPTAC) promotes inclusive economic development by assisting companies with providing products and/or services to federal, state, and local governments. KYPTAC is funded in part by the federal Defense Logistics Agency and KY Innovation via matching funds. The cooperative KYPTAC agreement is managed by KSTC. In addition to helping small businesses prepare to compete for public contracts, KYPTAC professionals provide expert guidance on topics ranging from acquisition procedures and policies to cybersecurity. All services to Kentucky businesses are provided at no cost to the business owner. KY Innovation's matching funds are allocated to staffing for KYPTAC's statewide counseling services. The program added counselors in Paducah, Bowling Green, and Louisville. Other offices include Lexington, Elizabethtown, Covington, and Morehead.

During the Reporting Period



KYPTAC assisted
512 new
businesses



Provided more than
2,900 counseling
hours



Held 88
training events

Kentucky Selling Farmer Tax Credit (KSFTC)

The Kentucky Selling Farmer Tax Credit (KSFTC) program encourages continued use of agricultural land for farming by granting tax credits to selling farmers who agree to sell agricultural land and assets to beginning farmers. Farmers wanting to sell agricultural land and assets may be eligible for a Kentucky income tax credit up to 5% of the purchase price of qualifying agricultural assets, subject to a \$25,000 calendar year cap and a \$100,000 lifetime cap. The statutory program requirements are set forth in KRS 154.60-040. Sales involving immediate family members do not qualify for tax credit consideration.

Tax credits awarded through this program may be claimed against the Kentucky individual income tax imposed by KRS 141.020, the corporation income tax imposed by KRS 141.040, and the limited liability entity tax imposed by KRS 141.0401. The tax credits are non-refundable, but unused credits may be carried forward up to five years.

The total combined allocation of tax credits available for both the Kentucky Selling Farmer Tax Credit program and the Kentucky Small Business Tax Credit program is \$3,000,000 per fiscal year. Both programs draw from the same tax credit pool. During the reporting period, a total of \$100,000 in KSFTCs were approved.

[SEE APPENDIX H FOR KSFTC RECIPIENTS](#)

State Trade Expansion Program (STEP) & Kentucky Export Initiative (KEI)

The Small Business Jobs Act of 2010 created the State Trade Expansion Program (STEP) in partnership with U.S. states and territories to assist small businesses with entering and expanding into international markets.

The Cabinet receives an annual or bi-annual competitive financial award from the Small Business Administration (SBA). The Cabinet then matches a percentage of that funding. Eligible Kentucky small businesses are admitted into STEP through an application process and receive reimbursement awards for allowable activities. The Cabinet submits quarterly reports on disbursements and outcomes of grant activity to the SBA.

Following Kentucky's entry into the STEP program in 2011, the Cabinet created the Kentucky Export Initiative (KEI) to unite and streamline the efforts of Kentucky's international trade partners. The initiative's focus is to assist Kentucky companies in increasing their revenue by finding new markets for their products, with the expectation that increased revenue will create new jobs, retain current employees, and boost GDP.

The KEI website serves as the central online location of resources for Kentucky exporters. The STEP application in addition to listings of federal and state agencies in the collaboration and their resources, export facts, and events such as training, trade shows, and trade mission opportunities are posted on the website to make it easy for businesses to find information on exporting and connect with KEI partners for export assistance.

Kentucky exported over \$29.5 billion of its goods and services to 201 countries in 2021. According to the latest available data, Kentucky exports supported over 106,483 Kentucky jobs (2020). The total of all commodities exported in 2021 was a 20 percent increase over 2020 indicating a rebound from the downward trend caused by the COVID-19 pandemic and international tariffs on U.S. goods and services. Kentucky continues to gain the momentum and success that saw the Commonwealth increase its international exports for 11 consecutive years.

Kentucky companies continued to show strong interest in the STEP grant. For example, companies claimed reimbursements on activities such as participating in virtual and domestic trade shows, building e-commerce platforms, translating websites and manuals to foreign languages, designing marketing media, shipping product samples, and subscribing to U.S. Commercial Service resources such as the International Partner Search.

The SBA extended the grant period for STEP Year 9 due to the COVID-19 pandemic. CED successfully closed STEP Year 8 on time and STEP Year 9 six months ahead of the September 29, 2022 deadline.

In May 2022, the Cabinet submitted a written proposal in response to the nationally competitive SBA notice of funding opportunity (NOFO) STEP Year 10 for \$400,000 federal funds with \$133,000 matching funds for a 24-month grant. STEP Year 10, if awarded, would begin on September 30, 2022 and end on September 29, 2024 depending on the availability of funds.

A complete revamp of the STEP grant application, Export Readiness and Growth Assessment, Eligibility (new), and supporting forms was undertaken in preparation for STEP Year 10. Policies were analyzed for efficiency and alignment with SBA goals.

State Trade Expansion Program

Step Grant Year	Performance Period of Awards	Number of Reimbursements	Number of Participating Companies	Amount Reimbursed
8	September 30, 2019 - September 29, 2021	103	3	\$289,000
9	September 30, 2020 - September 29, 2022	95	9	\$297,500

STEP Testimonials

"Johnson Industries had a major cash flow problem with the onset of COVID both in foreign and domestic sales. Johnson Industries was forced to lay off about 10 employees. With the help of the SBA loans, we were able to bring those employees back to work. The loans were enough to pay our payroll as we worked toward new markets. The grant allowed us to travel to Las Vegas to meet with potential customers as well as possible distributors."

Tony Bryant, Johnson Industries

"Being at Shot Show allows us to not only have a meeting place to connect with international customers from all over the world, but also helped us build relationships with other manufacturers that play a part in the international contract fulfillment process. A lot of times we have a RFQ but can only fill a portion of the request. As we establish these connections, it can support the bid process so we can add additional items to have a better chance in being awarded the full contract. It was also good to connect with other Kentucky manufacturers at Shot Show and explore how we can all support each other to make our exporting efforts more successful".

Michelle Pandow, Caliber Armo

"Given general travel costs and language barriers when dealing with many of our current and targeted export markets, our attendance at trade shows held in countries central within key market regions is critical for us to maintain and grow business. These would include shows in Singapore for the entire Asian market, Dubai for the entire Middle East market and Germany for the entire European segment. Many of our existing and targeted customers from various countries also attend these central trade show events making it cost effective and possible to meet with them face-to-face to bolster sales opportunities. In many cases, these shows may be the only opportunity to meet in person. Although much more cost effective to travel to one country hosting a trade show, versus trips to several countries, the cost of attending these shows is high and can exceed \$25,000 per show. The STEP Grant opportunity allows us to attend more shows and significantly extend our direct sales and marketing reach to many additional foreign markets. This is our third STEP Grant success story. As a result of these funds, we have added over 10 new dealers generating an estimated over \$500,000 in new annual sales".

Stacey Meredith, WhipMix Corporation

Talent Development

Governor's School for Entrepreneurs (GSE)

The Governor's School for Entrepreneurs (GSE) continues to be a driving force for Kentucky's entrepreneurial community and has much to celebrate after another successful summer. During the summer of 2022, GSE gave 144 Kentucky teens a once-in-a-lifetime chance to ignite their entrepreneurial spirits and pitch their business startup ideas at two highly competitive Demo Days on July 2 and July 30.



More than 400 high school students applied to participate in the two residential 2022 GSE sessions that ran from June 12 to July 2 and from July 10 to July 30 at Northern Kentucky University (NKU). Teams of students developed business models, designed prototypes and pitched their startup ideas at NKU to a prestigious panel of entrepreneur judges and an audience of 300 during each of the Demo Day events. Out of 18 innovative startup ideas for a service or product developed during each session, three teams of teen entrepreneurs earned cash prizes to continue their ventures.



First Place – [Callback Consulting](#) received \$1,000 for the development of a unique service that connects talented retirees to businesses, allowing them to share their insights and expertise as needed. Team members were Ellie Roberts, a sophomore at Great Crossing High School in Scott County; Hadley Mellenkamp, a junior at St. Patrick School in Mason County; Greer Glosick, a junior at Greenwood High School in Warren County; and Evan Ferry, a junior at Hancock County High School in Hancock County.



Second Place – [Catalytic Conserver](#) an attachment that goes on catalytic converters that prevents them from being stolen off of vehicles, received \$750. Team members were Emi Mizutani, a junior at Bardstown High School in Nelson County; Martha Toney, a junior at North Oldham High School in Oldham County; Ellie Whiteside, a junior at McCracken County High School in McCracken County; and Patrick Davis, a junior at Trinity High School in Jefferson County.



Third Place – [Gambit](#) received \$500 for the development of an app that allows political candidates to efficiently canvas and reach their constituents in a new, innovative way. Team members were Hayden Watkins, a sophomore at Rowan County Senior High School in Rowan County; Luke Parsley, a junior at Lawrence County High School in Lawrence County; Noah Gibson, a junior at Scott County High School in Scott County; and Cayden Bailey, a sophomore at Greenwood High School in Warren County.

This year, GSE partnered with [Render Capital](#) and [Access Ventures](#) for a new category at Demo Day: The \$500 Reconstruct Challenge Award, given to a team with an idea focused on making the world around them a better place. MapU, an app designed to help high school students get into their dream college, program, or secure prestigious extracurricular opportunities won the award. Team members were Sanya Ajmani, a junior at North Oldham High School in Oldham County; Tate Cox, a junior at Johnson Central High School in Johnson County; Avery Leveritt, a junior at Oldham County High School in Oldham County; and Ali Kashif, a junior at North Oldham High School in Oldham County.



First Place – Pivot Parking received \$1,000 for the development of a parking service solution using radio-frequency identification (RFID) chips to notify users which parking spots are free and which are not in a garage or large lot. Team members were Zahrah Al Garawi, a junior at Fairdale High School in Jefferson County; Katherine Vonder Haar, a sophomore at Kentucky Country Day School in Jefferson County; Taylor Smith, a junior at Breckinridge County High School in Breckinridge County; and Kevin Le, a junior at Henry Clay High School in Fayette County.



Second Place – TestPeak received \$750 for the creation of a centralized, personalized and affordable platform to help reduce test anxiety and improve test scores. Team members were Lydia Charles, a junior at Frederick Douglass High School in Fayette County; Alice Hagan, a sophomore at Seton Home Study School in Woodford County; Jackson Wilson, a sophomore at Highlands High School in Campbell County; Aleia Kate Harper, a junior at Barren County High School in Barren County.



Third Place – PreCovery received \$500 for the development of an app focused on preventing and managing athletic overtraining, specifically in runners. Team members were Daniel Khi, a sophomore at Trinity Christian Academy in Fayette County; Lilly Hartman, a junior at Henry Clay High School in Fayette County; Clay Pippen, a junior at Glasgow High School in Barren County; and LeAnn Campbell, a freshman at Jackson City School in Jackson County.

The \$500 Reconstruct Challenge Award was awarded to Stay Rooted in Session 2. Stay Rooted is a resource-based event service focused on the mental health of farmers. Team members were Riley Ellison, a sophomore at Great Crossing High School in Scott County; Elaine Chan, a junior at the Ignite Institute in Boone County; Layne Pry, a sophomore at the J. Graham Brown School in Jefferson County; and Ella Gough, a sophomore at Union County High School in Union County.

GSE alumni have launched more than 30 new businesses, filed multiple patents and developed new ideas and relationships that sow the seeds for more business formation. Dozens of alumni have chosen to enroll in entrepreneurial programs at Kentucky universities and attribute this decision to the inspiration they received by attending GSE in high school. GSE fosters and empowers the commonwealth's future business owners and community leaders, giving these teens the support they need to go from high school students to business owners.



APPENDICES

Appendix A: SBIR-STTR Matching Funds Recipients (Rounds 1-36)

Award Year	Company (in reverse chronological order)	Technology Area	Matching Grant
1/2022	AmDX PrognostX Incorporated, Inc.	Human Health and Personalized Medicine	\$80,000
1/2022	Bluegrass Advanced Materials, LLC	Environmental and Energy Technologies	\$80,000
1/2022	Carina Medical LLC	Human Health and Personalized Medicine	\$140,000
1/2022	Hexalayer LLC	Environmental and Energy Technologies	\$140,000
1/2022	Hummingbird Nano, Inc.	Materials Science and Advanced Manufacturing	\$80,000
1/2022	Lepidext Inc.	Agriculture and Bioscience	\$80,000
1/2022	RalphVR, Inc.	Information Technology and New Media	\$80,000
1/2022	Signal Solutions, LLC	Agriculture and Bioscience	\$140,000
1/2022	Synaptek LLC	Human Health and Personalized Medicine	\$80,000
7/2021	Active Therapy Systems, LLC	Human Health and Personalized Medicine	\$80,000
7/2021	Adelphi Technologies, LLC	Environmental and Energy Technologies	\$80,000
7/2021	HealthTech Solutions, Inc.	Information Technology and New Media	\$125,000
7/2021	Hitron Technologies, Inc.	Environmental and Energy Technologies	\$125,000
7/2021	Inquiry Technologies, LLC	Information Technology and New Media	\$125,000
7/2021	Kentucky Imaging Technologies, LLC	Human Health and Personalized Medicine	\$80,000
7/2021	MEMStim, LLC	Materials Science and Advanced Manufacturing	\$125,000
7/2021	VerraGlo, LLC	Agriculture and Bioscience	\$80,000
7/2021	Wild Dog Physics, LLC	Human Health and Personalized Medicine	\$80,000
7/20	Pascal Tags, LLC	Materials Science and Advanced Manufacturing	\$120,000
7/20	PowerTech Water, Inc.	Environmental and Energy Technologies	\$290,000
7/20	Advanced Energy Materials, LLC	Materials Science and Advanced Manufacturing	\$290,000
7/20	MEMStim, LLC	Materials Science and Advanced Manufacturing	\$290,000
7/20	Bioptics Technology, LLC	Human Health and Development	\$120,000
7/20	Cloverleaf.me.Inc.	Information Technologies and Communication	\$290,000
7/19	Enomalies, LLC	Information Technologies and Communication	\$461,000
7/19	Hexalayer, LLC	Environmental and Energy Technologies	\$150,000
7/19	Carina Medical, LLC	Human Health and Development	\$150,000
7/19	Brockman-Hastings, LLC	Human Health and Development	\$500,000
7/19	Lagrange Scientific, LLC	Human Health and Development	\$150,000
2018	Bluegrass Advanced Materials, LLC	Human Health and Development	\$500,000
2018	PowerTech Water, Inc.	Environmental and Energy Technologies	\$150,000
2018	Signal Solutions, LLC	Biosciences	\$150,000
2018	Active Therapy Systems LLC	Human Health and Development	\$150,000
2018	Lepidext L.L.C.	Biosciences	\$100,000
2018	Liberate Medical, LLC	Human Health and Development	\$112,387
2018	Enepret Incorporated	Biosciences	\$142,584
2018	Bert Thin Films, LLC	Environmental and Energy Technologies	\$249,994
2018	Endoscopy Assist Devices, LLC	Human Health and Development	\$150,000
2018	Gismo Therapeutics Inc.	Human Health and Development	\$500,000
3/17	MosquitoMate Inc	Biosciences	\$281,483
3/17	Brockman Hastings LLC	Human Health and Development	\$312,500

Award Year	Company (in reverse chronological order)	Technology Area	Matching Grant
3/17	Advanced Energy Materials, LLC	Materials Science and Advanced Manufacturing	\$343,080
3/17	MEMStim, LLC	Materials Science and Advanced Manufacturing	\$417,425
3/17	GISMO Therapeutics Inc	Human Health and Development	\$150,000
9/16	PowerTech Water, LLC	Materials Science and Advanced Manufacturing	\$397,194
9/16	Advanced Energy Materials, LLC	Materials Science and Advanced Manufacturing	\$150,000
9/16	Liberate Medical LLC	Human Health and Development	\$250,000
9/16	IOP Technologies, LLC	Environmental and Energy Technologies	\$124,901
9/16	ORB Technologies, LLC	Environmental and Energy Technologies	\$150,000
9/16	Hera Testing Labs, Inc.	Human Health and Development	\$400,000
9/16	Lumenari (fka EIE Materials, Inc.)	Materials Science and Advanced Manufacturing	\$255,443
9/16	UHV Technology, Inc.	Human Health and Development	\$400,000
7/1/16	Pyrochem Catalyst Company	Materials Science and Advanced Manufacturing	\$390,000
7/1/16	Hummingbird Nano Inc.	Materials Science and Advanced Manufacturing	\$268,838
7/1/16	Mercury Data Systems,	Information Technology and Communications	\$378,332
4/1/16	TutorGen, Inc.	Information Technology and Communications	\$487,500
4/1/16	Odorcept, LLC	Biosciences	\$150,000
4/1/16	RedLeaf Biologics, Inc.	Biosciences	\$150,000
1/1/16	Inquiry Technologies, LLC	Information Technologies and Communication	\$99,995
1/1/16	FasCure Therapeutics, LLC	Biosciences	\$150,000
1/1/16	Ncolalde R&D LLC	Information Technologies and Communication	\$106,486
1/1/16	Endo Protech Inc.	Human Health and Development	\$500,000
1/1/16	Rosellini Scientific, LLC	Biosciences	\$150,000
1/1/16	PGXL Technologies, LLC	Biosciences	\$150,000
10/1/15	Twin Star TDS, LLC	Biosciences	\$150,000
10/1/15	Signal Solutions, LLC	Biosciences	\$499,987
10/1/15	UHV Technology Inc.	Human Health and Development	\$150,000
10/1/15	True Secure SCADA, LLC	Information Technology & Communications	\$148,721
10/1/15	ORB Technologies, LLC	Environmental and Energy Technologies	\$99,993
10/1/15	PowerTech Water, LLC	Environmental and Energy Technologies	\$150,000
10/1/15	UHV Technology, Inc.	Materials and Advanced Manufacturing	\$491,000
10/1/15	EIE Materials, Inc. (dba Lumenari)	Materials and Advanced Manufacturing	\$474,246
10/1/15	Gen Nine, Inc.	Information Technology and Communications	\$500,000
10/1/15	Biomedical Development Corporation	Human Health and Development	\$500,000
10/1/15	Sunstrand, LLC	Materials and Advanced Manufacturing	\$262,496
10/1/15	Exscien	Biosciences	\$500,000
7/1/15	Lakota Technical Solutions, Inc.	Information Technology and Communication	\$499,958
7/1/15	Hera Testing Labs	Human Health and Development	\$500,000
7/1/15	Hera Testing Labs	Human Health and Development	\$225,000
7/1/15	GISMO Therapeutics, Inc.	Human Health and Development	\$224,997
7/1/15	TutorGen, Inc.	Information Technology and Communications	\$225,000
7/1/15	TherapyX, Inc.	Biosciences	\$271,000
4/1/15	Bert Thin Films, LLC	Materials and Advanced Manufacturing	\$150,000

Award Year	Company (in reverse chronological order)	Technology Area	Matching Grant
4/1/15	Amelgo, LLC	Biosciences	\$228,215
4/1/15	Naowise	Environmental and Energy Technologies	\$149,784
4/1/15	MosquitoMate Inc.	Biosciences	\$150,000
4/1/15	Okeanos Technologies, Inc	Environmental and Energy Technologies	\$215,930
4/1/15	3P Biotechnologies, Inc.	Human Health and Development	\$150,000
1/1/15	Advanced Genomic Technologies	Human Health and Development	\$500,000
1/1/15	Advanced Energy Materials, LLC	Materials Science and Advanced Manufacturing	\$483,003
1/1/15	Mercury Data Systems, Inc.	Information Technology and Communications	\$499,760
1/1/15	Innovative Diagnostics, Inc.	Human Health and Development	\$150,000
1/1/15	Pyrochem Catalyst Company	Materials and Advanced Manufacturing	\$150,000
1/1/15	Twin Star TDS	Biosciences	\$150,000
1/1/15	MEMStim, LLC	Materials and Advanced Manufacturing	\$150,000
1/1/15	Gen9, Inc.	Information Technology and Communications	\$150,000
1/1/15	nGimat, LLC	Materials and Advanced Manufacturing	\$499,978
10/1/14	Liberate Medical, LLC	Human Health and Development	\$149,092
10/1/14	Gradient Engineering, Inc.	Materials Science and Advanced Manufacturing	\$487,490
10/1/14	MosquitoMate, Inc.	Biosciences	\$497,894
10/1/14	Minerva Systems & Technologies, LLC	Information Technology and Communications	\$149,999
10/1/14	Hummingbird Nano, Inc	Materials Science and Advanced Manufacturing	\$149,265
7/1/14	Science Tomorrow, LLC	Materials Science and Advanced Manufacturing	\$500,000
7/1/14	UHV Technologies, Inc. (dba NanoRANCH Environmental Systems, Inc.	Environmental and Energy Technologies	\$499,995
7/1/14	W-Z BioTech, LLC	Human Health and Development	\$148,843
4/1/14	Tribo Flow Separations, LLC	Environmental and Energy Technologies	\$150,000
4/1/14	WaveTech, LLC	Materials Science and Advanced Manufacturing	\$150,000
4/1/14	Angiomics, Inc.	Biosciences	\$99,506
4/1/14	Sequela, LLC	Human Health and Development	\$500,000
4/1/14	Louisville Biosciences, Inc.	Biosciences	\$249,913
4/1/14	Kentucky Imaging Technologies, LLC	Human Health and Development	\$148,821
4/1/14	PGXL Technologies, LLC	Biosciences	\$149,910
4/1/14	Info Beyond Technologies, LLC	Information Technology and Communications	\$150,000
4/1/14	Mercury Data Systems, Inc.	Information Technology and Communications	\$147,908
4/1/14	AllTranz, Inc.	Biosciences	\$500,000
4/1/14	TutorGen, Inc.	Information Technology and Communications	\$150,000
4/1/14	GISMO Therapeutics, Inc.	Biosciences	\$150,000
1/1/14	Bluegrass Advanced Materials, LLC	Biosciences	\$149,973
1/1/14	CitiLogics, Inc.	Environmental and Energy Technologies	\$150,000
1/1/14	nGimat, LLC	Materials Science and Advanced Manufacturing	\$500,000
1/1/14	Care Team Solutions, LLC	Human Health and Development	\$150,000
1/1/14	Advanced Genomic Technologies, LLC	Human Health and Development	\$150,000
1/1/14	eNormalies, LLC	Information Technologies and Communications	\$150,000

Award Year	Company (in reverse chronological order)	Technology Area	Matching Grant
1/1/14	Noveratech, LLC	Human Health and Development	\$150,000
1/1/14	Okeanos Technologies, Inc.	Environmental and Energy Technologies	\$146,100
10/1/13	Mercury Data	Information Technology and Communications	\$146,043
10/1/13	Care Team Solutions, LLC	Human Health and Development	\$149,307
10/1/13	Apiq Semiconductor, LLC	Materials Science and Advanced Manufacturing	\$150,000
10/1/13	Bauer Labs, LLC	Human Health and Development	\$150,000
10/1/13	Multi Scale Solutions, Inc.	Biosciences	\$149,982
10/1/13	Directed Energy, Inc.	Materials Science and Advanced Manufacturing	\$499,990
10/1/13	Entrepreneurial Innovation	Information Technology and Communications	\$150,000
10/1/13	Twin Star TDS	Biosciences	\$500,000
10/1/13	Tier1 Performance Solutions	Information Technology and Communications	\$499,972
10/1/13	Cytoinformatics, LLC	Information Technology and Communications	\$150,000
10/1/13	Nicolalde R&D LLC	Human Health and Development	\$142,603
10/1/13	Orthopeutics, LP	Biosciences	\$150,000
10/1/13	Science Tomorrow, LLC	Materials Science and Advanced Manufacturing	\$149,191
7/1/13	Naprogenix, Inc.	Biosciences	\$499,684
7/1/13	Alkymos, Inc.	Human Health and Development	\$213,542
7/1/13	Signal Solutions, LLC	Biosciences	\$150,000
7/1/13	NOHMs Technologies, Inc.	Environmental and Energy Technologies	\$325,000
4/1/13	Advanced Energy Materials	Materials Science and Advanced Manufacturing	\$150,000
4/1/13	Vindico NanoBioTechnology, Inc.	Biosciences	\$150,000
1/1/13	New Global Systems for Intelligent Transportation Management	Information Technology and Communications	\$500,000
1/1/13	Hitron Technologies, Inc.	Materials Science and Advanced Manufacturing	\$250,000
1/1/13	SCR, Inc.	Human Health and Development	\$500,000
1/1/13	CoPlex Therapeutics	Biosciences	\$99,791
1/1/13	NuForm Materials, LLC	Human Health and Development	\$149,998
1/1/13	3P Biotechnologies, Inc.	Human Health and Development	\$150,000
1/1/13	Four Tigers, LLC	Human Health and Development	\$317,040
1/1/13	Advanced Cancer Therapeutics	Human Health and Development	\$150,000
10/1/12	EndoProtech, Inc.	Human Health and Development	\$150,000
10/1/12	Biomedical Development Corporation	Human Health and Development	\$299,915
10/1/12	Biomedical Development Corporation	Human Health and Development	\$150,000
10/1/12	Minerva Systems & Technologies, LLC	Information Technology and Communications	\$148,260
10/1/12	MosquitoMate, Inc.	Biosciences	\$150,000
10/1/12	AllTranz, Inc.	Biosciences	\$150,000
10/1/12	Rigid Solutions, LLC	Materials Science and Advanced Manufacturing	\$149,999
10/1/12	Okeanos Technologies, Inc.	Environmental and Energy Technologies	\$79,264
7/1/12	Noveratech	Human Health and Development	\$150,000
7/1/12	Regenerex LLC	Biosciences	\$150,000
7/1/12	Vindico NanoBio Technology Inc.	Biosciences	\$150,000

Award Year	Company (in reverse chronological order)	Technology Area	Matching Grant
7/1/12	Brockman Hastings LLC	Human Health and Development	\$150,000
7/1/12	Innovative Energy Solutions	Environmental and Energy Technologies	\$252,810
7/1/12	Invenio Therapeutics	Biosciences	\$150,000
7/1/12	InfoBeyond LLC	Information Technology and Communications	\$256,783
7/1/12	TeleHealth Holdings LLC	Human Health and Development	\$100,000
7/1/12	TeleHealth Holdings LLC	Human Health and Development	\$150,000
4/1/12	Minerva Systems and Technologies LLC	Information Technology and Communications	\$337,018
4/1/12	Wilson's Cedar Point Farms	Biosciences	\$99,961
4/1/12	Sequela LLC	Human Health and Development	\$150,000
4/1/12	Alcomed Inc.	Biosciences	\$500,000
1/1/12	Amelgo LLC	Biosciences	\$100,000
1/1/12	Regenerex LLC	Biosciences	\$500,000
1/1/12	AMT Nano	Materials Science and Advanced Manufacturing	\$90,000
1/1/12	customKYnetics Inc.	Human Health and Development	\$494,458
1/1/12	Transposagen Biopharmaceuticals Inc.	Human Health and Development	\$500,000
1/1/12	Invenio Therapeutics	Human Health and Development	\$434,480
1/1/12	nGimat	Materials Science and Advanced Manufacturing	\$374,996
1/1/12	Tier1 Performance Solutions Inc.	Information Technology and Communications	\$396,000
1/1/12	Bexion Pharmaceuticals Inc.	Biosciences	\$500,000
10/1/11	ParaTechs Corporation	Human Health and Development	\$459,478
10/1/11	AllTranz Inc.	Biosciences	\$150,000
10/1/11	W-Z BioTech LLC	Human Health and Development	\$150,000
7/1/11	ATI, Inc.	Materials Science and Advanced Manufacturing	\$98,748
7/1/11	3H Company	Environmental and Energy Technologies	\$232,212
7/1/11	Advanced Genomic Technology	Health and Human Development	\$500,000
4/1/11	nGimat	Materials Science and Advanced Manufacturing	\$500,000
4/1/11	Orthopeutics	Health and Human Development	\$359,400
4/1/11	NaugaNeedles	Materials Science and Advanced Manufacturing	\$375,758
2/1/11	Alkymos	Biosciences	\$500,000
2/1/11	Advanced Energy Materials	Environmental and Energy Technologies	\$150,000
2/1/11	Alcomed	Health and Human Development	\$150,000
2/1/11	Scout Diagnostics	Biosciences	\$435,600
2/1/11	Global Quality Corp.	Information Technology and Communications	\$364,990
2/1/11	Louisville Biosciences	Biosciences	\$249,913
2/1/11	Bexion Pharmaceuticals	Health and Human Development	\$500,000
11/1/10	Transposagen Biopharmaceuticals	Biosciences	\$499,936
11/1/10	SureGene	Health and Human Development	\$365,579
11/1/10	Exatherm	Health and Human Development	\$500,000
11/1/10	ParaTechs Corp.	Health and Human Development	\$111,002
11/1/10	customKYnetics	Health and Human Development	\$147,783
11/1/10	NuForm Materials	Materials Science and Advanced Manufacturing	\$149,996
11/1/10	InfoBeyond Technology	Information Technology and Communications	\$99,000

Award Year	Company (in reverse chronological order)	Technology Area	Matching Grant
7/1/10	Advanced Dynamics	Information Technology and Communications	\$364,999
7/1/10	Vindico NanoBio Technologies	Health and Human Development	\$100,000
7/1/10	Advanced Genomic Technologies	Biosciences	\$100,000
7/1/10	Talon Technologies	Materials Science and Advanced Manufacturing	\$99,996
7/1/10	3H Company	Environmental and Energy Technologies	\$267,786
7/1/10	Orthopeutics	Biosciences	\$408,000
7/1/10	nGimat	Materials Science and Advanced Manufacturing	\$500,000
3/1/10	NaugaNeedles	Materials Science and Advanced Manufacturing	\$100,000
3/1/10	Atkins and Pearce	Environmental and Energy Technologies	\$99,983
3/1/10	Oraceuticals	Biosciences	\$100,000
3/1/10	Vision Dynamics	Materials Science and Advanced Manufacturing	\$100,000
3/1/10	TiER1 Performance Solutions	Information Technology and Communications	\$395,000
1/1/10	Topasol	Materials Science and Advanced Manufacturing	\$251,000
1/1/10	Pharmacogenetics Diagnostic Laboratory	Biosciences	\$375,000
1/1/10	NuForm Materials	Materials Science and Manufacturing	\$314,000
1/1/10	SCR	Health and Human Development	\$430,000
1/1/10	ApolImmune	Biosciences	\$430,000
1/1/10	Four Tigers	Human Health and Development	\$100,000
1/1/10	3H Company	Environmental and Energy Technologies	\$99,989
1/1/10	Transposagen Biopharmaceuticals	Human Health and Development	\$100,000
1/1/10	NaugaNeedles	Materials Science and Manufacturing	\$100,000
10/1/09	SureGene	Human Health and Development	\$361,939
10/1/09	EndoProtech	Human Health and Development	\$270,000
10/1/09	Vision Dynamics	Materials Science and Manufacturing	\$250,000
10/1/09	Louisville Biosciences	Biosciences	\$99,801
10/1/09	Adaptive Intelligent Systems	Materials and Advanced Manufacturing	\$449,966
6/1/09	Advanced Dynamics	Information Technology and Communications	\$99,917
5/1/09	ParaTechs	Human Health and Development	\$100,000
4/1/09	Transposagen Biopharmaceuticals	Biosciences	\$100,000
4/1/09	NeoCytex Biopharmaceuticals	Biosciences	\$100,000
3/1/09	TiER1 Performance Solutions	Information Technology and Communications	\$99,982
3/1/09	Synergetic Technologies	Materials Science and Advanced Manufacturing	\$99,666
2/1/09	ATI	Materials Science and Advanced Manufacturing	\$99,838
2/1/09	3H Company	Environmental and Energy Technologies	\$99,998
1/1/09	Bexion Pharmaceuticals	Biosciences	\$99,965
11/1/08	Advanced Intelligent Systems	Materials Science and Advanced Manufacturing	\$100,000
11/1/08	ApolImmune	Biosciences	\$100,000
10/1/08	ApolImmune	Biosciences	\$500,000
10/1/08	Naprogenix	Biosciences	\$199,000
10/1/08	SCR	Human Health and Development	\$500,000
10/1/08	Pharmacogenetics Diagnostic Laboratory	Biosciences	\$500,000
9/1/08	Adaptive Intelligent Systems	Materials Science and Advanced Manufacturing	\$599,678

Award Year	Company (in reverse chronological order)	Technology Area	Matching Grant
9/1/08	customKYnetics	Human Health and Development	\$741,809
9/1/08	Mersive Technologies (D)	Information Technology and Communications	\$499,564
9/1/08	Turbo Wheelchairs Company	Human Health and Development	\$741,924
7/1/08	Allylix	Biosciences	\$100,000
7/1/08	NeoCytex Biopharmaceuticals	Biosciences	\$100,000
7/1/08	Sequela	Human Health and Development	\$965,273
7/1/08	Tova Industries	Information Technology and Communications	\$80,000
6/1/08	Alkymos	Human Health and Development	\$99,646
6/1/08	Atkins & Pearce	Materials Science and Advanced Manufacturing	\$88,900
6/1/08	Stallion Therapeutics	Human Health and Development	\$100,000
4/1/08	customKYnetics	Human Health and Development	\$100,000
4/1/08	Direct i2i	Information Technology and Communications	\$100,000
4/1/08	Peptides International	Biosciences	\$100,000
4/1/08	Adaptive Intelligent Systems	Materials Science and Advanced Manufacturing	\$100,000
3/1/08	Novera	Biosciences	\$846,500
3/1/08	Topasol	Materials Science and Advanced Manufacturing	\$99,100
3/1/08	NuForm Materials	Materials Science and Advanced Manufacturing	\$98,602
2/1/08	Vision Dynamics	Materials Science and Advanced Manufacturing	\$99,589
1/1/08	Assenti	Biosciences	\$374,985
1/1/08	Transposagen Biopharmaceuticals	Biosciences	\$1,000,000
1/1/08	Tribo Flow Separations	Biosciences	\$100,000
1/1/08	Advanced Dynamics	Information Technology and Communications	\$599,990
12/1/07	Alltranz	Human Health and Development	\$100,000
11/1/07	Pharmacogenetics Diagnostic Laboratory	Biosciences	\$100,000
11/1/07	Advanced Dynamics	Information Technology and Communications	\$99,999
10/1/07	SCR	Health and Human Development	\$100,000
10/1/07	Naprogenix	Biosciences	\$498,460
10/1/07	Naprogenix	Biosciences	\$100,000
10/1/07	ParaTechs	Biosciences	\$743,666
10/1/07	Apolmmune	Biosciences	\$100,000
7/1/07	Hosting.com (D)	Information Technology and Communications	\$100,000
7/1/07	Sequela	Health and Human Development	\$100,000
7/1/07	Scout Diagnostics	Health and Human Development	\$99,843
6/1/07	Wilson's Cedar Point Farms	Biosciences	\$79,729
5/1/07	Advanced Dynamics	Information Technology and Communications	\$99,900
4/1/07	Regenerex	Human Health and Development	\$100,000
4/1/07	Topasol	Materials Science and Advanced Manufacturing	\$78,000
4/1/07	Neathery Technologies	Environmental and Energy technologies	\$70,000
3/1/07	Oraceuticals	Health and Human Development	\$100,000
3/1/07	Naprogenix	Health and Human Development	\$100,000
3/1/07	Lumenware	Information Technology and Communications	\$100,000
3/1/07	Adaptive Intelligent Systems	Materials Science and Advanced Manufacturing	\$69,999
3/1/07	ParaTechs	Biosciences	\$80,000

Award Year	Company (in reverse chronological order)	Technology Area	Matching Grant
3/1/07	Potentia Pharmaceuticals	Health and Human Development/Biosciences	\$100,000
3/1/07	SureGene	Health and Human Development	\$100,000
3/1/07	ECM Biosciences	Biosciences	\$100,000
3/1/07	ApolImmune	Biosciences	\$100,000
3/1/07	Mersive Technologies (D)	Information Technology and Communications	\$98,222
3/1/07	SCR	Human Health and Development	\$100,000
3/1/07	customKYnetics	Human Health and Development	\$100,000
Total for Approved Matching Grants:			\$68,281,736

Appendix B: KEF Portfolio Information KEF Investments in FY22

Company	Location	Focus Area	Cash Investment
ALT Distilling	Nelson	Material/Manufacturing	\$100,000.00
C2 Keep	Jefferson	Technology/Software	\$60,000.00
Community Treatment & Tracking Solutions (CTTS)	Whitley	Technology/Software	\$50,000.00
Enviro-Fresh	McCracken	Material/Manufacturing	\$50,000.00
EZ Chow	Jefferson	Technology/Software	\$50,000.00
EZ Holdings (EZ Turn)	Fayette	Technology/Software	\$50,000.00
Fair Chance Works	Laurel	Technology/Software	\$50,000.00
FlyWire	Fayette	Environmental/Energy	\$150,000.00
FreshFry	Jefferson	Material/Manufacturing	\$105,000.00
GoodMaps	Jefferson	Technology/Software	\$200,000.00
GoWild	Oldham	Technology/Software	\$300,000.00
Humblebrag	Fayette	Technology/Software	\$50,000.00
Innovative Therapeutix	Jefferson	Biotech/Life Sciences/Healthcare	\$25,000.00
Legal Gantt	Jefferson	Technology/Software	\$50,000.00
Limitless	Jefferson	Technology/Software	\$5,000.00
Lok-N-Blok (Plastiblok)	McCracken	Material/Manufacturing	\$500,000.00
Melanated Healthcare	Jefferson	Technology/Software	\$50,000.00
Modica	Jefferson	Material/Manufacturing	\$50,000.00
Moolathon	Oldham	Technology/Software	\$25,000.00
NASCEND	Jefferson	Technology/Software	\$49,920.00
Nexosome Oncology	Jefferson	Biotech/Life Sciences/Healthcare	\$320,000.00
OmniLife (Healthtech Solutions)	Fayette	Biotech/Life Sciences/Healthcare	\$100,000.00
OrgVitals	Jefferson	Technology/Software	\$205,000.00
Parasight Systems	Fayette	Technology/Software	\$249,997.60
PreventScripts (Personal Medicine Plus)	McCracken	Biotech/Life Sciences/Healthcare	\$40,000.00
PyroChem Catalyst Company	Jefferson	Material/Manufacturing	\$100,000.00
RAADZ	Jefferson	Technology/Software	\$63,250.00
RaveOn Sports	Fayette	Technology/Software	\$25,000.00
Repaytient	Jefferson	Technology/Software	\$25,000.00
Resound	Jefferson	Technology/Software	\$250,000.00
Seamly Systems	McCracken	Technology/Software	\$50,000.00
Smoove Creations	Campbell	Material/Manufacturing	\$50,000.00
Symba	Jefferson	Technology/Software	\$75,000.00
Synaptek	Fayette	Biotech/Life Sciences/Healthcare	\$150,000.00
UJoin	Calloway	Technology/Software	\$50,000.00
Victory Hemp Foods	Carroll	Material/Manufacturing	\$399,999.88
VSimple	Jefferson	Technology/Software	\$200,000.00
Working Title Labs	Jefferson	Technology/Software	\$50,000.00
Xena Intelligence	Jefferson	Technology/Software	\$25,000.00

Xiled Inc.	Pike	Technology/Software	\$50,000.00
XpressRun	Jefferson	Technology/Software	\$50,000.00
Yornest	Jefferson	Technology/Software	\$100,000.00

KEF Portfolio Information through FY22

The majority of KEF portfolio clients are working with a Kentucky university or college. Through the end of FY21, 62% of KEF investments have a Kentucky university or college as a partner, meaning that the company has spun out from the partner, is building a product or service based on intellectual property from the partner, or has partnered with the school for development.

#	Company	Status	Location	Industry	University Affiliation	# of Investment
1	Advanced Cancer Therapeutics	Monitored	Jefferson	Biotech/Life Sciences/Health-care	UL	3
2	Agri-Grow Technologies	Exited	Fayette	Environmental/Energy	UK	1
3	Allylix	Exited	Fayette	Biotech/Life Sciences/Health-care	UK	3
4	ALT Distilling	Monitored	Nelson	Material/Manufacturing	n/a	1
5	Apellis Pharmaceuticals	Exited	Oldham	Biotech/Life Sciences/Health-care	UL	5
6	Apoimmune	Exited	Jefferson	Biotech/Life Sciences/Health-care	UL	5
7	Aptamera	Exited	Jefferson	Biotech/Life Sciences/Health-care	UL	1
8	Athenic Systems	Exited	Fayette	Technology/Software	UK	1
9	Baltech (Harris Technology)	Monitored	Boyd	Material/Manufacturing	n/a	1
10	BehaVR	Monitored	Hardin	Biotech/Life Sciences/Health-care	n/a	2
11	BellaNovus Development Company	Exited	Jefferson	Biotech/Life Sciences/Health-care	UL	1
12	Bexion Pharmaceuticals	Monitored	Boone	Biotech/Life Sciences/Health-care	n/a	2
13	Blue Sky Case Management	Monitored	Jefferson	Technology/Software	n/a	1
14	BrainSTEM	Monitored	Jefferson	Technology/Software	n/a	1
15	Buswell Energy	Exited	Madison	Environmental/Energy	UK	2
16	C2 Keep	Monitored	Jefferson	Technology/Software	n/a	1
17	Ceptaris Therapeutics	Exited	Fayette	Biotech/Life Sciences/Health-care	UK	1
18	ChipRx	Exited	Fayette	Biotech/Life Sciences/Health-care	UK	1
19	Cloverleaf	Monitored	Campbell	Technology/Software	NKU	2
20	Cobra Stylet	Monitored	Jefferson	Biotech/Life Sciences/Health-care	UL	2
21	Cognition	Monitored	Jefferson	Biotech/Life Sciences/Health-care	UL	2

22	Collabra	Exited	Jefferson	Technology/Software	n/a	1
23	Community Treatment & Tracking Solutions (CTTS)	Monitored	Whitley	Technology/Software	n/a	1
24	Conexus	Exited	Jefferson	Technology/Software	n/a	1
25	Construction Industry Resources	Monitored	Fayette	Technology/Software	n/a	1
26	Control my ADHD	Exited		Biotech/Life Sciences/Health-care	UK	1
27	CountIt	Monitored	Jefferson	Technology/Software	n/a	1
28	CredentialedCare	Exited	Jefferson	Biotech/Life Sciences/Health-care	n/a	1
29	Credit Fair-E	Exited	Jefferson	Technology/Software	n/a	1
30	CrownMob	Exited	Kenton	Technology/Software	n/a	1
31	Cuddle Clones	Exited	Jefferson	Material/Manufacturing		1
32	Curio Learning	Monitored	Jefferson	Technology/Software	n/a	1
33	dbaDIRECT	Exited	Boone	Technology/Software	n/a	1
34	Dito Solutions	Exited	Boone	Technology/Software	n/a	1
35	Earthineer	Exited	Gallatin	Technology/Software	NKU	5
36	EdjSports	Exited	Jefferson	Technology/Software	UL	1
37	Elektra	Exited	Hardin	Biotech/Life Sciences/Health-care	UL	1
38	EndoProtech	Monitored	Jefferson	Biotech/Life Sciences/Health-care	UL	1
39	Enviro-Fresh	Monitored	McCracken	Material/Manufacturing	n/a	1
40	EZ Chow	Monitored	Jefferson	Technology/Software	n/a	1
41	EZ Holdings	Monitored	Fayette	Technology/Software	UK	1
42	Fair Chance Works	Monitored	Laurel	Technology/Software	n/a	1
43	FanGo Software Systems	Exited	Fayette	Technology/Software	UK	1
44	Feet to the Fire Writers' Workshops	Monitored	Jefferson	Biotech/Life Sciences/Health-care	n/a	1
45	Float Money	Exited	Fayette	Technology/Software	n/a	4
46	FlyWire	Monitored	Fayette	Environmental/Energy	UK	2
47	FreshFry	Monitored	Jefferson	Material/Manufacturing	UL	4
48	Global Shelter Systems (HESCO)	Exited	Campbell	Material/Manufacturing	UK	2
49	Gnarus Systems	Monitored	Jefferson	Biotech/Life Sciences/Health-care	UL	1
50	GoodMaps	Monitored	Jefferson	Technology/Software	n/a	1
51	GoWild	Monitored	Oldham	Technology/Software	n/a	2
52	Griffin Residuals	Monitored	Ohio	Environmental/Energy	WKU	3
53	Gryphon Environmental	Monitored	Ohio	Material/Manufacturing	WKU	2
54	Gun Media	Monitored	Fayette	Technology/Software	n/a	4
55	HANDLE	Monitored	Oldham	Biotech/Life Sciences/Health-care	n/a	4
56	High Tide Technologies	Exited	Warren	Technology/Software	WKU	1

57	Hijro Network (Fluent)	Exited	Fayette	Technology/Software	n/a	1
58	Hippo Manager	Exited	Fayette	Technology/Software	n/a	4
59	Hollison Technologies	Monitored	Daviess	Material/Manufacturing	n/a	2
60	Hometeam Digital	Exited	Hardin	Technology/Software	n/a	1
61	Humblebrag	Monitored	Fayette	Technology/Software	n/a	1
62	HuMed Technologies	Monitored	Fayette	Biotech/Life Sciences/Health-care	UK	1
63	Hummingbird Nano	Monitored	Fayette	Material/Manufacturing	UK	2
64	IF Technologies	Exited	Fayette	Technology/Software	n/a	6
65	ImmunoTheragnostics	Exited	Jefferson	Biotech/Life Sciences/Health-care	UL	1
66	InnoRem	Exited	Jefferson	Biotech/Life Sciences/Health-care	UL	1
67	Innovative Therapeutix	Monitored	Jefferson	Biotech/Life Sciences/Health-care	UL	3
68	INOR	Exited	Fayette	Biotech/Life Sciences/Health-care	n/a	1
69	Intellirod Spine	Exited	Jefferson	Biotech/Life Sciences/Health-care	UL	2
70	Intrepid Bioinformatics Solutions	Exited	Jefferson	Biotech/Life Sciences/Health-care	UL	1
71	iPillBox	Exited	Jefferson	Biotech/Life Sciences/Health-care	n/a	1
72	Irvine Technologies	Exited	Estill	Material/Manufacturing	n/a	1
73	Jacobs Automation	Exited	Boone	Material/Manufacturing	n/a	5
74	Kentucky Wool Society	Exited	Bourbon	Material/Manufacturing	UK	1
75	LDG Sleep Technologies	Exited	Jefferson	Biotech/Life Sciences/Health-care	UK	1
76	Legal Gantt	Monitored	Jefferson	Technology/Software	NKU	4
77	LevTech	Exited	Fayette	Material/Manufacturing	UK	1
78	Liberate Medical	Monitored	Oldham	Biotech/Life Sciences/Health-care	UL	2
79	Lift3D	Exited	Jefferson	Biotech/Life Sciences/Health-care	n/a	1
80	Limitless	Monitored	Jefferson	Technology/Software	n/a	1
81	LocalBride	Exited	Fayette	Technology/Software	UK	1
82	Lok-N-Blok (Plastiblok)	Monitored	McCracken	Material/Manufacturing	n/a	1
83	Lorinth's Lab	Exited	Jefferson	Technology/Software	UK	1
84	LPD	Exited	Kenton	Material/Manufacturing	NKU	1
85	Lumenari	Exited	Fayette	Material/Manufacturing	n/a	1
86	MailHaven	Exited	Jefferson	Material/Manufacturing	n/a	1
87	Medbiomarkers	Exited	Jefferson	Biotech/Life Sciences/Health-care	n/a	1
88	Melanated Healthcare	Monitored	Jefferson	Technology/Software	UL	1
89	Mersive Technologies	Exited	Fayette	Technology/Software	UK	1
90	Metromojo	Exited	Jefferson	Technology/Software	n/a	2

91	MobileServe	Monitored	Jefferson	Technology/Software	UL	2
92	Modica	Monitored	Jefferson	Material/Manufacturing	n/a	1
93	Moolathon	Monitored	Oldham	Technology/Software	n/a	2
94	MPI (Murty Pharmaceuticals)	Exited	Fayette	Biotech/Life Sciences/Health-care	Murray St	1
95	Naprogenix	Monitored	Fayette	Biotech/Life Sciences/Health-care	UK	2
96	NASCEND	Monitored	Jefferson	Technology/Software	n/a	1
97	Nebecor	Exited	Powell	Material/Manufacturing	UK	1
98	Net Quest Services	Exited	Jefferson	Biotech/Life Sciences/Health-care	UK	1
99	Neuro Atlas	Exited	Jefferson	Biotech/Life Sciences/Health-care	UL	1
100	Nexosome Oncology	Monitored	Jefferson	Biotech/Life Sciences/Health-care	UL	1
101	Nomad Innovations	Exited	Jefferson	Technology/Software	n/a	1
102	Novobrace (Equinext)	Exited	Fayette	Biotech/Life Sciences/Health-care	UK	2
103	NX Development Corp	Exited	Jefferson	Biotech/Life Sciences/Health-care	UL	2
104	NX PharmaGen	Monitored	Jefferson	Biotech/Life Sciences/Health-care	UL	4
105	NX Prenatal	Monitored	Jefferson	Biotech/Life Sciences/Health-care	UL	3
106	Nymbi Systems	Monitored	Fayette	Biotech/Life Sciences/Health-care	n/a	1
107	OmniLife (Healthtech Solutions)	Monitored	Fayette	Biotech/Life Sciences/Health-care	n/a	2
108	On Call Central (Acumantra Solutions)	Exited	Kenton	Technology/Software	n/a	1
109	Onovative	Exited	Jefferson	Technology/Software	n/a	2
110	OrgVitals	Monitored	Jefferson	Technology/Software	UL	2
111	Parasight Systems	Monitored	Fayette	Technology/Software	UK	2
112	ParaTechs	Exited	Fayette	Biotech/Life Sciences/Health-care	UK	1
113	ParkVu Holdings	Exited	Jefferson	Technology/Software	n/a	2
114	Pavr Solutions	Monitored	Jefferson	Technology/Software	n/a	1
115	PeopleStrategy	Exited	Boone	Technology/Software	WKU	1
116	Podchaser	Monitored	Jefferson	Technology/Software	n/a	2
117	Potentia Pharmaceuticals	Exited	Jefferson	Biotech/Life Sciences/Health-care	UL	2
118	PowerTech Water (Electramet)	Monitored	Fayette	Environmental/Energy	UK	4
119	Pradama	Exited	Jefferson	Biotech/Life Sciences/Health-care	UL	3
120	PreventScripts (Personal Medicine Plus)	Monitored	McCracken	Biotech/Life Sciences/Health-care	n/a	2
121	PyroChem Catalyst Company	Monitored	Jefferson	Material/Manufacturing	n/a	2

122	Quantum Leap	Exited	Jefferson	Technology/Software	n/a	1
123	RAADZ	Monitored	Jefferson	Technology/Software	WKU	3
124	RaveOn Sports	Monitored	Fayette	Technology/Software	n/a	1
125	RDT2M	Exited	Franklin	Technology/Software	n/a	1
126	Regenerex (Talaris Therapeutics)	Exited	Jefferson	Biotech/Life Sciences/Healthcare	UL	1
127	Repaytient	Monitored	Jefferson	Technology/Software	n/a	1
128	Resonant Vibes	Exited	Jefferson	Technology/Software	n/a	1
129	Resound	Monitored	Jefferson	Technology/Software	n/a	1
130	Revio (GearBrake)	Exited	Jefferson	Material/Manufacturing	UL	1
131	RhinoCyte	Exited	Jefferson	Biotech/Life Sciences/Healthcare	UL	2
132	Rise Design	Exited	Jefferson	Material/Manufacturing		1
133	Schedule It	Exited	Hardin	Technology/Software	n/a	4
134	Seamly Systems	Monitored	McCracken	Technology/Software	n/a	1
135	Seikowave	Monitored	Fayette	Technology/Software	UK	4
136	Seikowave Dental	Monitored	Fayette	Biotech/Life Sciences/Healthcare	UK	2
137	SentryHealth (SHI Legacy Company, Inc)	Monitored	Jefferson	Biotech/Life Sciences/Healthcare	UL	6
138	ShareLab	Exited	Jefferson	Technology/Software	UL	1
139	Simba USA	Exited	Rowan	Material/Manufacturing	n/a	1
140	SinglePipe Communications	Exited	Jefferson	Technology/Software	UL	2
141	Sisters of Invention	Exited	Woodford	Material/Manufacturing	n/a	1
142	Smart Farm Systems	Exited	Jessamine	Technology/Software	n/a	3
143	Smoove Creations	Monitored	Campbell	Material/Manufacturing	NKU	1
144	Starborn Healthcare Solutions	Exited	Fayette	Biotech/Life Sciences/Healthcare	n/a	1
145	Stucco	Monitored	Jefferson	Technology/Software	n/a	1
146	Summit Biosciences	Monitored	Fayette	Biotech/Life Sciences/Healthcare	UK	1
147	SuperFan	Exited	Jefferson	Technology/Software	UL	2
148	Support Nerds, LLC	Exited	Warren	Technology/Software	n/a	1
149	SureGene	Exited	Jefferson	Biotech/Life Sciences/Healthcare	UL	1
150	Switcher Studio	Monitored	Jefferson	Technology/Software	Bellarmine	2
151	Sword Performance (Sport Geeks)	Monitored	Knox	Material/Manufacturing	UK	1
152	Symba	Monitored	Jefferson	Technology/Software	n/a	2
153	Synaptex	Monitored	Fayette	Biotech/Life Sciences/Healthcare	UK	2
154	Tally Rally	Exited	Jefferson	Technology/Software	Bellarmine	1
155	TapLogic	Monitored	Calloway	Technology/Software	Murray St	2
156	The Corporate Playbook	Exited	Jefferson	Technology/Software	n/a	1
157	The University (Futur-E-Scape)	Exited	Kenton	Technology/Software	n/a	1

158	Toggle Health (MedUX)	Monitored	Jefferson	Biotech/Life Sciences/Health-care	n/a	1
159	TrackFive Diagnostics	Exited	Fayette	Biotech/Life Sciences/Health-care	UL	1
160	Ucloser	Exited	Jefferson	Technology/Software	n/a	1
161	UJoin	Monitored	Calloway	Technology/Software	n/a	1
162	US Worldmeds	Monitored	Jefferson	Biotech/Life Sciences/Health-care	UK	2
163	Vaquera Group (Further Media/11Picas)	Monitored	Jefferson	Technology/Software	n/a	1
164	Victory Hemp Foods	Monitored	Carroll	Material/Manufacturing	UK	3
165	Virtual Peaker	Monitored	Jefferson	Environmental/Energy	n/a	1
166	VitaTech	Exited	Jefferson	Biotech/Life Sciences/Health-care	UL	1
167	Vivorte	Monitored	Jefferson	Biotech/Life Sciences/Health-care	UL	6
168	VoicePad (Standard Voice Networks)	Exited	Jefferson	Technology/Software	UL	1
169	VSimple	Monitored	Jefferson	Technology/Software	n/a	2
170	WeatherCheck Inc	Exited	Jefferson	Technology/Software	n/a	1
171	WeStyle	Exited	Fayette	Technology/Software	UK	1
172	Working Title Labs	Monitored	Jefferson	Technology/Software	n/a	1
173	Xena Intelligence	Monitored	Jefferson	Technology/Software	n/a	1
174	Xiled Inc.	Monitored	Pike	Technology/Software	n/a	1
175	Xometry (MakeTime)	Exited	Fayette	Technology/Software	n/a	5
176	XpressRun	Monitored	Jefferson	Technology/Software	UL	1
177	Yornest	Monitored	Jefferson	Technology/Software	Bellarmine	1
178	Zynerba Pharmaceuticals	Exited	Fayette	Biotech/Life Sciences/Health-care	UK	3
179	ZYUS (Revon Systems)	Monitored	Oldham	Biotech/Life Sciences/Health-care	UL	2

Appendix C: CSC Portfolio Information through Calendar Year 2021

Current Company Investment Portfolio

Company	Location	Focus Area	Total
Avail	Lexington	Information Technology	\$100,000
Bluegrass Vascular Technology	Texas	Medical Devices	\$108,072
CMS Holdings	Lexington	Information Technology	\$31,060
Construction Industry Resources (CIR)	Lexington	Information & Analytics	\$218,655
EdjSports	Lexington	Information Technology	\$250,000
Elite Rad Reporting (formerly MedMyne)	Lexington	Healthcare	\$200,000
Entrep	Richmond	Information Systems	\$500,000
Frogdice	Lexington	Video Game Development	\$423,319
Gryphon Environmental	Owensboro	Advanced Mfg Technology	\$277,982
Gun Media Holdings	Lexington	Video Game Development	\$127,982
Healthcare Asset Network (Handle)	Prospect	Health Information Technology	\$250,000
HealthTech Solutions (OmniLife)	Lexington	Healthcare	\$250,000
Hera Testing Laboratories	Lexington	Biotechnology	\$564,562
Hippo Manager Software	Lexington	Information Technology	\$300,000
Hummingbird Nano	Nicholasville	Advanced Manufacturing	\$300,000
KY-270 - BrainSTEM	Louisville	EdTech Virtual Learning	\$10,000
KY-270 - Moolathon	Louisville	Social Fundraising Platform	\$30,000
KY-270 - PavR Solutions	Louisville	Information Technology	\$10,000
KY-270 – Personal Medicine Plus	Paducah	Disease Management	\$10,000
KY-270 - Synaptech	Lexington	Concussion Data Management	\$20,000
Liberate Medical	Crestwood	Healthcare	\$100,000
Lepidext	Lexington	BioAgriculture	\$50,000
MEP Equine Solutions	Lexington	Equine Technology	\$575,000
NeuroOp	Atlanta, GA	Biosciences	\$112,258
NX PharmaGen	Louisville	Pharmaceutical Drug Discovery	\$457,310
NX Prenatal	Louisville	Pharmaceutical Drug Discovery	\$584,415
Powertech Water	Lexington	Biotechnology	\$301,178
Pyrochem Catalyst	Louisville	Advanced Manufacturing	\$399,949
Seikowave	Lexington	3D Imaging and Measurements	\$557,960
Seikowave Dental	Lexington	Advanced Manufacturing	\$100,000
SentryHealth	Louisville	Health Information Technology	\$686,665
Smart Farm Systems	Nicholasville	Agriculture Technology	\$200,000
SpaceTango	Lexington	Space Technology	\$200,000
Summit Biosciences	Lexington	Bioscience	\$37,310
SuperFanU	Louisville	Information Technology	\$144,626
Switcher	Louisville	Information Technology	\$200,000

TNG Pharmaceuticals	Louisville	Agricultural Pharmaceuticals	\$218,655
Unity Aluminum	Ashland	Advanced Manufacturing	\$15,000,000
Vivorte	Louisville	Orthopedic Medical Devices	\$516,525
WearWare (FlyWire)	Lexington	Information Technology	\$250,000

Current Equity Fund Portfolio

Fund Name	Location	Commitment	Funded to Date	% of CSC Total Fund Portfolio
Appalachian Micro Equity Fund	London	\$500,000	\$316,250	3.81%
Bluegrass Angel Venture Fund III	Lexington	\$300,000	\$300,000	3.61%
Bluegrass Angel Venture Fund IV	Lexington	\$500,000	\$500,000	6.02%
Bluegrass Angel Venture Fund V	Lexington	\$500,000	\$100,000	1.20%
Cherub 2.0 Fund	Covington	\$80,000	\$80,000	0.96%
Chrysalis Ventures III, LP	Louisville	\$3,000,000	\$3,000,000	36.11%
CONNETIC Fund, LLC	Covington	\$300,000	\$300,000	3.61%
CONNETIC Fund II, LLC	Covington	\$500,000	\$300,000	3.61%
Enterprise Angels Community Fund I	Louisville	\$300,000	\$300,000	3.61%
Unbridled Ventures	Louisville	\$250,000	\$62,500	0.75%
River Cities Capital Fund IV, LP	Cincinnati	\$2,000,000	\$1,850,000	22.27%
Tri-State Angel Investment Fund I	Ashland	\$100,000	\$100,000	1.20%
UpTech Fund II	Covington	\$100,000	\$100,000	1.20%
Yearling Fund I, LP	Louisville	\$500,000	\$500,000	6.02%
Yearling Fund II, LP	Louisville	\$500,000	\$500,000	6.02%

Appendix D: Historical Information About HTP Recipients

Approval Date	Company	County	Approved Incentive Amount
5/30/2019	Kentucky Entrepreneurship Education Network, Inc. (KEENStart)	Franklin	\$265,000
3/28/2019	Roth River, Inc.	Jefferson	\$100,000
3/29/2018	Response Techs, LLC		\$250,000
4/27/2017	Commonwealth Seed Capital, LLC (thru Kentucky Economic Development Partnership)	Fayette	\$15,000,000
12/8/2016	Awesome Center for Entrepreneurship	Fayette	\$100,000
12/8/2016	XlerateHealth (Non-Profit), Inc.	Jefferson	\$100,000
10/27/2016	Kentucky Science and Technology Corporation	Fayette	\$500,000
7/28/2016	Western Kentucky University Research Foundation	Warren	\$200,000
6/30/2016	MakeTime, Inc.	Fayette	\$500,000
1/28/2016	University of Kentucky Research Foundation - IACMI Project	Fayette	\$150,000
12/10/2015	Awesome Center for Entrepreneurship	Fayette	\$50,000
12/10/2015	UpTech, Inc.	Kenton	\$100,000
8/27/2015	XlerateHealth (Non-Profit), Inc.	Jefferson	\$50,000
10/30/2014	Awesome Fellowship, LLC	Fayette	\$50,000
5/29/2014	UpTech, LLC	Kenton	\$150,000
3/27/2014	University of Kentucky Research Foundation - (KY Argonne Battery Mfg. Research &	Fayette	\$500,000
3/27/2014	Kentucky Science and Technology Corporation - SBIR-STTR Matching Funds Program	Fayette	\$2,000,000
3/27/2014	Morehead-Rowan Economic Development Council - Morehead Innovation and Realizatio	Rowan	\$50,000
4/25/2013	UpTech, LLC	Kenton	\$25,000
3/28/2013	Kentucky Science and Technology Corporation - Space Tango Project	Fayette	\$100,000
10/25/2012	Jacobs Automation, Inc.	Boone	\$250,000
10/25/2012	Kentucky Science and Technology Corporation (Federal and State Technology (FAST)	Fayette	\$120,000
9/27/2012	Greater Louisville Foundation, Inc. (EnterpriseCorp Software Accelerator - Healt	Jefferson	\$150,000
7/26/2012	Control Systems Design and Automation, Inc.	Warren	\$75,000
6/28/2012	Allylix Inc.	Fayette	\$200,000
3/29/2012	CirrusMio, Inc.	Fayette	\$100,000
3/29/2012	Western Kentucky University Research Foundation, Inc.	Warren	\$100,000
12/8/2011	Ferm Solutions, Inc.	Boyle	\$75,000
9/29/2011	Kentucky Highlands Investment Corporation	Laurel	\$15,000
7/28/2011	Nucleus: Kentucky's Life Sciences and Innovation Center, LLC	Jefferson	\$3,000,000
5/26/2011	Commonwealth Seed Capital, LLC	Franklin	\$6,000,000

4/28/2011	Frogdice, Inc.	Fayette	\$80,000
4/28/2011	Transposagen Biopharmaceuticals, Inc.	Fayette	\$250,000
3/31/2011	NaugaNeedles, LLC	Jefferson	\$100,000
1/27/2011	Pharmacogenetics Diagnostic Laboratory, LLC	Jefferson	\$200,000
1/27/2011	Hitcents.com, Inc.	Warren	\$150,000
12/9/2010	Vivorte, Inc.	Jefferson	\$120,000
12/9/2010	Bexion Pharmaceuticals, LLC	Kenton	\$155,000
10/28/2010	ZoomEssence, Inc.	Boone	\$175,000
10/28/2010	Escent Technologies, LLC	Fayette	\$200,000
10/28/2010	Corning Incorporated	Mercer	\$250,000
9/30/2010	Remington Arms Company, Inc.	Hardin	\$200,000
9/30/2010	Pure Power Technologies, LLC	Warren	\$100,000
7/29/2010	nGimat, LLC	Fayette	\$250,000
6/30/2010	Martek Biosciences Corporation	Clark	\$250,000
5/27/2010	Gerard Ventures dba Ischemia Care		\$100,000
3/25/2010	Waterway Innovations, LLC	McCracken	\$150,000
2/25/2010	ParaTechs Corporation	Fayette	\$120,000
1/28/2010	Connected Patients, LLC	Fayette	\$100,000
1/28/2010	HyGreen, Inc. fka Xhale, Inc.	Warren	\$175,000
12/10/2009	Summit Biosciences Inc.	Fayette	\$250,000
12/10/2009	LGC Science, Inc.	Fayette	\$425,000
12/10/2009	Energy and Environmental Cabinet - The Kentucky Argonne National Battery Mfg. Re	Franklin	\$3,500,000
10/29/2009	Laboratory and BioDiagnostics, LLC	Fayette	\$250,000
10/29/2009	Louisville Bioscience, Inc.	Jefferson	\$250,000
7/30/2009	Jacobs Automation, LLC	Campbell	\$150,000
7/30/2009	Gryphon Environmental, LLC	Ohio	\$100,000
6/25/2009	Emerald Laboratories, LLC	Simpson	\$500,000
5/28/2009	PHD Diagnostics, LLC	Kenton	\$200,000
4/30/2009	NaugaNeedles, LLC	Jefferson	\$120,000
4/30/2009	Kentucky Highlands Investment Corporation	Laurel	\$100,000
12/11/2008	Kentucky Science and Technology Corporation	Fayette	\$3,300,000
12/11/2008	Transposagen Pharmaceuticals, Inc.	Fayette	\$325,000
12/11/2008	MedX12, Inc.	Jefferson	\$160,000
12/11/2008	Lending Cycle, Inc.	Jefferson	\$119,000
10/30/2008	Vet-Stem, Inc.	Jefferson	\$550,000
8/28/2008	Kentucky Technology, Inc. (Coldstream Research Campus)	Fayette	\$5,500,000
6/29/2008	Advanced Cancer Therapeutics LLC	Jefferson	\$187,000
5/29/2008	LeanCor, LLC	Boone	\$350,000
2/28/2008	dbaDirect, Inc.	Boone	\$469,000
2/28/2008	3DR Laboratories, LLC	Jefferson	\$250,000
1/31/2008	Conexus, LLC	Jefferson	\$238,000
1/31/2008	Advanced Genomic Technology, LLC	Jefferson	\$153,000
1/31/2008	Smoothstone IP Communications Corporation	Jefferson	\$500,000
12/13/2007	Mersive Technologies, Inc.	Fayette	\$255,000

12/13/2007	EAS Technologies, LLC.	Fayette	\$500,000
12/13/2007	Corevalus Systems, LLC	Scott	\$300,000
8/30/2007	Data Futures, Inc	Harlan	\$126,233
8/30/2007	SureGene LLC	Jefferson	\$510,000
7/26/2007	CreoSalus, Inc.	Jefferson	\$750,000
6/28/2007	Knight-ED, LLC	Fayette	\$220,113
6/28/2007	Wind Energy Corporation	Hardin	\$595,000
6/28/2007	Northrop Grumman Systems Corporation	Warren	\$125,000
4/27/2007	SearchDaddy LLC	Kenton	\$350,000
4/26/2007	AllTranz, LLC	Fayette	\$500,000
4/26/2007	ALT BioScience, LLC	Fayette	\$150,000
4/26/2007	Celerity Automation, Inc.	Johnson	\$500,000
4/26/2007	Center for Technology Enterprise, Inc. (DBA ConnectKentucky)	Warren	\$950,000
3/29/2007	TapLogic LLC	Calloway	\$500,000
2/22/2007	Peptides International, Inc.	Jefferson	\$175,000
2/22/2007	Southeast Kentucky Economic Development Corporation (SKED) / National Bio and Ag	Pulaski	\$80,000
12/7/2006	Semicon Associates, a Division of Ceradyne, Inc.	Fayette	\$275,000
12/7/2006	US WorldMeds, LLC	Jefferson	\$1,300,000
10/26/2006	Growth Services, LLC dba Kentucky BioAlliance	Jefferson	\$300,000
9/28/2006	Life Sciences Commercialization Program	Jefferson	\$4,700,000
6/29/2006	MetaCyte Business Lab, LLC (06/07)	Jefferson	\$750,000
6/29/2006	ConnectKentucky (Center for Technology Enterprise-CITE) -06/07	Warren	\$950,000
3/30/2006	Secat, Inc. (Equipment)	Fayette	\$850,000
3/30/2006	Apolimmune, Inc./APOVAX Vaccine	Jefferson	\$500,000
2/23/2006	University of Kentucky Research Foundation (Prototyping Equipment)	Fayette	\$1,436,000
2/23/2006	Alltech, Inc. (Center for Animal Nutrigenomics)	Jessamine	\$1,000,000
2/23/2006	Southeast Kentucky Economic Development Corp. (Nat. Bio & Agro-Defense Facility)	Pulaski	\$124,900
1/26/2006	NKU - Risk Management Technology	Campbell	\$276,973
1/26/2006	NKU-Infrastructure Management Institute	Campbell	\$332,710
1/26/2006	WKU - Small Business Accelerator Expansion	Warren	\$423,500
12/16/2005	Kentucky Datasream Initiative, Inc.	Jefferson	\$1,900,000
10/27/2005	Cymbion, LLC	Jefferson	\$650,000
10/27/2005	Madison Avenue Launch Team, Inc.	Kenton	\$75,000
10/27/2005	Central Region Innovation and Commercialization Center, Inc.	Warren	\$250,000
9/29/2005	Murray State University (Paducah IC)	Calloway	\$64,182
9/29/2005	Murray State University (Regional Center for Emerging Technology- RCET)	Calloway	\$127,603
9/29/2005	University of Kentucky Research Foundation (Closed Vial System)	Fayette	\$500,000
9/29/2005	Kentucky Datasream Initiative, Inc. (Coal County Computing Program)	Jefferson	\$175,000
9/29/2005	City of Paintsville (Ky. Highlands Entrepreneur Center)	Johnson	\$75,000

8/25/2005	University of Kentucky College of Pharmacy	Fayette	\$1,240,000
8/25/2005	Ky.Commerce Cabinet (Office of Energy Policy, Div. of Energy Research) Clean Coa	Franklin	\$2,000,000
8/25/2005	KY. Commerce Cabinet (Office of Energy Policy, Div. of Rearch) FutureGen	Franklin	\$950,000
8/25/2005	KY. Commerce Cabinet (Office of Energy Policy, Div. of Energy Research)	Franklin	\$1,877,778
8/25/2005	The Jewish Hospital Foundation (Cardiovascular Institute)	Jefferson	\$625,000
8/25/2005	Madison Avenue Launch Team, Inc. (Madison E-Zone ICC)	Kenton	\$60,000
8/25/2005	Eastern Kentucky University (Eastern Region ICC Headquarters/Satellites)	Madison	\$325,000
8/25/2005	Eastern Kentucky University (Incubator for Safety & Security)	Madison	\$51,845
8/25/2005	Central Region Innovation and Commercialization Center, Inc. (Elizabethtown ICC)	Warren	\$146,200
7/28/2005	Louisville Medical Center Development Corporation/ Metacyte Business Lab, LLC	Jefferson	\$750,000
5/26/2005	Center For Information Technology Enterprise, Inc. d/b/a ConnectKentucky (CITE)	Warren	\$1,900,000
3/28/2005	Louisville/Jefferson County Metro Government - MedVenture Technology Corporation	Jefferson	\$350,000
1/27/2005	Sloan Center for Sustain Alum (SECAT)	Fayette	\$150,000
1/27/2005	Northern Ky. - Williamstown Satellite - North Ky.	N/A	\$40,893
1/27/2005	Central Region Satellites - Central Ky.	N/A	\$271,944
1/27/2005	Murray State - Western Reg Satellites - West Ky.	N/A	\$293,629
1/27/2005	EKU - Eastern Regional Satellites - East Ky.	N/A	\$646,253
1/27/2005	Innovation and Commercial Centers (KSTC) - Statewide	N/A	\$1,343,221
1/27/2005	BIO Conference 2005 (Statewide)	N/A	\$100,000
12/2/2004	MetaCyte Business Lab/iTRC Ideas to Action Business Incubator	Jefferson	\$275,000
4/29/2004	University of Kentucky/Aichi USA 2005 World Exposition	Fayette	\$125,000
10/30/2003	Murray State University /RCET/equipment	Calloway	\$100,000
10/30/2003	UK College of Agriculture/Kentucky Natural Products Alliance	Fayette	\$250,000
10/30/2003	NKU/Rural Northern Kentucky Innovation Satellite Office/ Grant County	Grant	\$150,000
10/30/2003	Madison E Zone/Invest By Being A Customer	Kenton	\$50,000
10/30/2003	Belcan Partners/Morgan County-West Liberty IT Center	Morgan	\$800,000
10/30/2003	CITE/Sponsored Research Database Project	Warren	\$50,000
9/25/2003	Kentucky Natural Products Fund/Commonwealth Seed LLC	Franklin	\$5,000,000
8/28/2003	U of L/i TRC Ideas to Action Incubator -FY0304	Jefferson	\$150,000
7/31/2003	Murray State University/RCET/Energy Consortium Grant Program-FY0304	Calloway	\$1,000,000
7/31/2003	Murray State University/RCET/operating-FY0304	Calloway	\$150,000
7/31/2003	NKU/Institute for New Economy Technologies(iNET) -FY0304	Campbell	\$400,000

7/31/2003	Owensboro Biotechnology Alliance/Industry, Inc.-FY0304	Daviess	\$150,000
7/31/2003	UK/Center for Pharmaceutical Science and Technology/ FY0304	Fayette	\$1,000,000
7/31/2003	Kentucky Technology Service/KMAC-FY0304	Fayette	\$175,000
7/31/2003	UK/U of L/Kentucky Cancer Experimental Therapy Program	Fayette	\$4,000,000
7/31/2003	UK/Visualization Center/21st Century Manufacturing Initiative -FY0304	Fayette	\$3,000,000
7/31/2003	EKU/Public Safety & Security Institute - FY0304	Madison	\$715,000
7/31/2003	Central Region Coordinator/Central Region ICC -FY0304	Warren	\$134,500
6/26/2003	Murray State University/Workforce Development Initiative - FY0304	Calloway	\$50,000
6/26/2003	U of L/Cardiovascular Innovation Institute FY0304	Jefferson	\$2,533,000
6/26/2003	U of L/Proteomics Training Facility - FY0304	Jefferson	\$500,000
6/26/2003	LMCDC/Metacyte Business Lab -FY0304	Jefferson	\$200,000
6/26/2003	Paintsville/Johnson County Small Business Incubator (City of Paintsville) FY0304	Johnson	\$250,000
6/26/2003	Paintsville/Johnson County Small Business Incubator (City of Paintsville) FY0203	Johnson	\$250,000
6/26/2003	Northern Kentucky New Economy Marketing Plan/Tri-Ed - FY0304	Kenton	\$250,000
6/26/2003	Madison E Zone/operations - FY0304	Kenton	\$100,000
6/26/2003	Morgan County Regional Technology Center (UK) FY0304	Morgan	\$325,000
6/26/2003	Morgan County Regional Technology Center (UK) FY0203	Morgan	\$110,000
6/26/2003	Barren River Development Council FY0304	Warren	\$100,000
6/26/2003	CITE/eBusiness Strategy Group - FY0304	Warren	\$200,000
6/26/2003	CITE/connectkentucky FY0304	Warren	\$200,000
5/29/2003	Owensboro Biotechnology Alliance/Industry, Inc. -FY0203	Daviess	\$150,000
5/29/2003	Wayne County Rural Broadband Initiative (CITE)-FY0304	Wayne	\$150,000
1/30/2003	Murray State University/RCET/Energy Consortium Grant Program -FY0203	Calloway	\$1,000,000
1/30/2003	Lexington-Fayette Urban County Government/The Factory	Fayette	\$350,000
1/30/2003	Central Region Coordinator/Central Region ICC- FY0203	Warren	\$150,000
1/30/2003	Barren River Development Council FY02/03	Warren	\$100,000
12/20/2002	Northern Kentucky New Economy Marketing Plan/Tri-Ed -FY0203	Kenton	\$250,000
12/20/2002	EKU/Public Safety & Security Institute -FY0203	Madison	\$585,000
10/31/2002	Murray State University/Workforce Development Initiative -FY0203	Calloway	\$50,000
10/31/2002	Kentucky Technology Service/KMAC-FY0203	Fayette	\$175,000
10/31/2002	UK/Center for Pharmaceutical Science and Technology-FY0203	Fayette	\$1,000,000
10/31/2002	CITE/eBusiness Strategy Group -FY0203	Warren	\$200,000
9/26/2002	Murray State University/RCET/operating-FY0203	Calloway	\$150,000
9/26/2002	NKU/Institute for New Economy Technologies (INET)-FY0203	Campbell	\$400,000
9/26/2002	CITE/connectkentucky FY0203	Warren	\$200,000

9/26/2002	NKU/Institute for New Economy Technologies (INET)-FY0203	Campbell	\$400,000
9/26/2002	CITE/connectkentucky FY0203	Warren	\$200,000
8/29/2002	UK/Visualization Center/21st Century Manufacturing Initiative-FY0203	Fayette	\$2,000,000
8/29/2002	LMCDC/Metacyte Business Lab -FY0203	Jefferson	\$200,000
8/29/2002	U of L/Structural Biology Program/X-ray Diffractometer	Jefferson	\$250,000
8/29/2002	U of L/Proteomics Training Facility -FY0203	Jefferson	\$500,000
8/29/2002	U of L/Cardiovascular Innovation Institute FY0203	Jefferson	\$2,467,000
8/29/2002	U of L/iTRC Ideas to Action Incubator-FY0203	Jefferson	\$150,000
8/29/2002	Madison E Zone/operations - FY0203	Kenton	\$100,000
6/27/2002	EKU/Regional Director/Safety & Security Director	Madison	\$500,000
1/31/2002	UK/Pharmaceutical Science & Technology Project/building	Fayette	\$4,000,000
1/31/2002	Kentucky First/Madison Avenue Launch Team	Kenton	\$500,000
9/27/2001	Murray State University/RCET/West Ky Energy Consortium	Calloway	\$400,000
9/27/2001	NKU/NKU Emerging Technology Triangle Project	Campbell	\$500,000
9/27/2001	SKEDC/Valley Oak Business & Technology Park	Pulaski	\$200,000
6/28/2001	Commonwealth Seed Capital, LLC	Fayette	\$11,100,000
6/28/2001	EKU/Eastern Ky. ICC -FY0203	Madison	\$5,000,000
5/31/2001	Murray State University/RCET/building	Calloway	\$1,500,000
5/31/2001	KSTC/Kentucky Innovation and Commercialization Program	Fayette	\$1,300,000
5/31/2001	Madison E-Zone ICC	Kenton	\$500,000
3/28/2001	U of L/LMCDC/Technolgy Innovation Center	Jefferson	\$5,000,000
3/28/2001	WKU/Integrated Engineering Applications Laboratory	Warren	\$1,000,000
3/28/2001	WKU/Center for Research & Development	Warren	\$4,000,000
Total Support Provided			\$156,959,477

Appendix E: KAITC Recipients

Entity	Investor	FI County	Final Approval Date	Projected Angel Investment	Actual Angel Investment	Final Incentive Amount
Bexion Pharmaceuticals, Inc.	Zalla, John W.	Kenton	5/26/22	\$800,000.00	\$800,000.00	\$200,000.00
Bexion Pharmaceuticals, Inc.	Forgiel, Mary Zalla	Kenton	5/26/22	\$50,000.00	\$50,000.00	\$12,500.00
Bexion Pharmaceuticals, Inc.	Burch, Leroy	Kenton	5/26/22	\$200,000.00	\$200,009.39	\$50,000.00
borderless LLC	Herrera, Melinda J.	Jefferson	7/29/21	\$80,000.00	\$80,000.00	\$20,000.00
CPA Innovations, LLC	Bhatia, Aneeta R.	Jefferson	9/30/21	\$39,861.00	\$39,861.00	\$9,965.00
CPA Innovations, LLC	Hornung, William Keith	Jefferson	10/28/21	\$50,000.00	\$50,058.00	\$12,500.00
CPA Innovations, LLC	Greenberg, John Ross	Jefferson	10/28/21	\$75,000.00	\$75,087.00	\$18,750.00
CPA Innovations, LLC	McClelland, Martin N.	Jefferson	10/28/21	\$100,000.00	-	\$25,000.00
Hippo Manager Software, Inc.	Toutant, Roy T.	Fayette	7/29/21	\$80,000.00	\$80,000.00	\$20,000.00
Hippo Manager Software, Inc.	Luftman, Brian Aaron	Fayette	7/29/21	\$15,000.00	\$15,000.00	\$3,750.00
Hippo Manager Software, Inc.	Smith, Stewart A.	Fayette	7/29/21	\$15,000.00	\$15,000.00	\$3,750.00
Hippo Manager Software, Inc.	Hager Jr, W. Lyman	Fayette	7/29/21	\$45,000.00	\$45,000.00	\$11,250.00
Lepidext, Inc.	Toutant, Roy T.	Fayette	4/28/22	\$50,000.00	\$50,000.00	\$12,500.00
Liberate Medical (DE), Inc.	Toutant, Roy T.	Oldham	12/9/21	\$25,000.00	\$25,000.01	\$6,250.00
Liberate Medical (DE), Inc.	La Rocca, Renato V.	Oldham	12/9/21	\$10,000.00	\$10,000.00	\$2,500.00
Liberate Medical (DE), Inc.	McDaniel, John Ryan	Oldham	12/9/21	\$25,000.00	\$25,000.00	\$6,250.00
Liberate Medical (DE), Inc.	Francois, Cedric	Oldham	12/9/21	\$100,000.00	\$100,000.00	\$25,000.00
Liberate Medical (DE), Inc.	Moore, John Marshall	Oldham	12/9/21	\$25,000.00	\$25,000.00	\$6,250.00
MEP Equine Solutions, LLC	Chait, Jonathan F.	Fayette	8/26/21	\$50,000.00	\$50,000.00	\$12,500.00
MEP Equine Solutions, LLC	Jakobi, Larry A.	Fayette	8/26/21	\$50,000.00	\$50,000.00	\$12,500.00
MEP Equine Solutions, LLC	Toutant, Roy T.	Fayette	12/9/21	\$50,000.00	\$49,997.25	\$12,500.00
MEP Equine Solutions, LLC	Schackel, Richard Lee	Fayette	12/9/21	\$50,000.00	\$25,000.00	\$12,500.00
MEP Equine Solutions, LLC	Frey, Robert E.	Fayette	12/9/21	\$25,000.00	\$24,999.76	\$6,250.00
Mindful Beverage Group, Inc.	Warner, Gayla L.	Jefferson	5/26/22	\$12,000.00	\$12,000.00	\$3,000.00
Parasight System Inc.	Young, Christopher H.	Fayette	3/31/22	\$250,000.00	\$249,888.00	\$62,500.00
Personal Medicine Plus LLC	Luftman, Brian Aaron	McCracken	12/9/21	\$10,000.00	\$10,000.00	\$4,000.00
Personal Medicine Plus LLC	Followell, Robert A.	McCracken	12/9/21	\$12,500.00	\$12,500.00	\$5,000.00
Predictive Sports Science, LLC	Nicholson, Theodore G.	Jefferson	7/29/21	\$45,000.00	\$45,000.00	\$11,250.00
RedLeaf Biologics, Inc.	Stuedle, Joseph A.	Fayette	10/28/21	\$50,000.00	\$50,000.00	\$12,500.00
RedLeaf Biologics, Inc.	Stuedle, Margaret Kristin	Fayette	10/28/21	\$50,000.00	\$50,000.00	\$12,500.00
RedLeaf Biologics, Inc.	Kakoyiannis, Jason Peter	Fayette	7/29/21	\$50,000.00	\$49,997.00	\$12,500.00
RedLeaf Biologics, Inc.	Olive, Marc-Antoine	Fayette	8/26/21	\$50,000.00	-	\$12,500.00
RedLeaf Biologics, Inc.	Gray, Julia Rebekah Hinson	Fayette	10/28/21	\$50,000.00	\$50,000.00	\$12,500.00
RedLeaf Biologics, Inc.	Boone, Caroline H.	Fayette	6/30/22	\$50,000.00	\$50,000.00	\$12,500.00
RedLeaf Biologics, Inc.	Tucker, Austin Thomas	Fayette	12/9/21	\$37,500.00	\$37,500.00	\$9,375.00

RedLeaf Biologics, Inc.	Tucker, Thomas Thornton	Fayette	12/9/21	\$100,000.00	\$100,000.00	\$25,000.00
RedLeaf Biologics, Inc.	Sizemore, Jacob Matthew	Fayette	12/9/21	\$37,500.00	\$37,500.00	\$9,375.00
RedLeaf Biologics, Inc.	Gray, II, James P.	Fayette	12/9/21	\$25,000.00	\$25,000.00	\$6,250.00
RedLeaf Biologics, Inc.	Saligman, Lynn C.	Fayette	12/9/21	\$250,000.00	\$250,000.00	\$62,500.00
RedLeaf Biologics, Inc.	Woomer, Patti Saligman	Fayette	12/9/21	\$250,000.00	\$250,000.00	\$62,500.00
RedLeaf Biologics, Inc.	Wachtell, Theodore	Fayette	12/9/21	\$100,000.00	\$100,000.00	\$25,000.00
RedLeaf Biologics, Inc.	Wu, Ying	Fayette	1/27/22	\$12,000.00	\$12,000.00	\$3,000.00
RedLeaf Biologics, Inc.	Baum, Mark L	Fayette	1/27/22	\$15,000.00	\$14,994.99	\$3,750.00
RedLeaf Biologics, Inc.	Wong, Kimlee	Fayette	1/27/22	\$20,000.00	\$20,000.00	\$5,000.00
RedLeaf Biologics, Inc.	Fine, Daniel M	Fayette	1/27/22	\$30,000.00	\$30,000.00	\$7,500.00
RedLeaf Biologics, Inc.	Wolk, Robert Ian	Fayette	1/27/22	\$25,000.00	\$25,000.00	\$6,250.00
RedLeaf Biologics, Inc.	Kaya, Umit	Fayette	1/27/22	\$20,000.00	\$20,000.00	\$5,000.00
Stuff by Text Inc.	Beanblossom, Brent Christian	Jefferson	12/9/21	\$50,000.00	\$50,000.00	\$12,500.00
Stuff by Text Inc.	McClelland, Martin N.	Jefferson	12/9/21	\$100,000.00	\$100,000.00	\$25,000.00
Synaptek LLC	Toutant, Roy T.	Fayette	10/28/21	\$25,000.00	\$25,000.00	\$6,250.00
Thynk Health, LLC	McClelland, Martin N.	Fayette	9/30/21	\$100,000.00	\$100,000.00	\$25,000.00
Thynk Health, LLC	Hoseus, Michael S.	Fayette	5/26/22	\$100,000.00	\$100,000.00	\$25,000.00
Thynk Health, LLC	Luftman, Brian Aaron	Fayette	4/28/22	\$50,000.00	\$50,000.00	\$12,500.00
Vivorte (DE), Inc.	Stuedle, Joseph A.	Jefferson	5/26/22	\$50,000.00	\$50,000.00	\$12,500.00
Vivorte (DE), Inc.	Stuedle, Margaret Kristin	Jefferson	5/26/22	\$100,000.00	\$100,000.00	\$25,000.00
Wendal Inc	Kienzle, Barry G.	Kenton	5/26/22	\$50,600.00	\$50,600.00	\$12,650.00
Wendal Inc	Pietromonaco, MaryAnn	Kenton	6/30/22	\$10,032.00	\$10,032.00	\$2,508.00
Wendal Inc	Duncan, Angela M.	Kenton	6/30/22	\$10,032.00	\$10,032.00	\$2,508.00
Wendal Inc	Lanham, Nicholas R.	Kenton	5/26/22	\$40,040.00	\$40,040.00	\$10,010.00
Wendal Inc	Watkins, Matthew David	Kenton	6/30/22	\$10,032.00	\$10,032.00	\$2,508.00
Wendal Inc	Zapp, Robert W.	Kenton	4/28/22	\$50,000.00	\$50,000.00	\$12,500.00
Wendal Inc	Grace, Corey Paul	Kenton	4/28/22	\$20,020.00	\$20,020.00	\$5,005.00
Wendal Inc	Verst, Paul Thomas	Kenton	4/28/22	\$50,000.00	\$49,984.00	\$12,500.00
Wendal Inc	Arrasmith, II, Jerry Joseph	Kenton	4/28/22	\$30,008.00	\$30,008.00	\$7,502.00
Wendal Inc	Schlotman, John Michael	Kenton	4/28/22	\$50,028.00	\$50,028.00	\$12,507.00
Wendal Inc	Beck, Steven Clay	Kenton	6/30/22	\$10,032.00	\$10,032.00	\$2,508.00
Wendal Inc	Haas, Eric A.	Kenton	6/30/22	\$22,000.00	\$22,000.00	\$5,500.00
Wendal Inc	Bray, Scott R.	Kenton	6/30/22	\$20,328.00	\$20,328.00	\$5,082.00
Wendal Inc	Lonnemann, Jr., John Michael	Kenton	6/30/22	\$10,032.00	\$10,032.00	\$2,508.00
Grand Totals (91 records)				\$4,519,545.00	\$4,344,560.40	\$1,133,261

Appendix F: KSBTC Recipients

Company Name	County	Base Employment Number	New Jobs Projected	Average Hourly Wage	Final Total Estimated Costs	Final Incentive Amount
1st Class Mortgage Group, LLC	Jefferson	0	1	\$23.06	\$6,330.00	\$3,500.00
Ackerman CPAS, LLC	Jefferson	0	2	\$20.43	\$7,135.00	\$7,000.00
Advanced Dental Center, Inc.	Jefferson	0	7	\$27.02	\$27,900.00	\$24,500.00
Airmart, Inc.	Fayette	10	2	\$17.50	\$5,969.00	\$5,900.00
All Hours Lock & Key, LLC	Fayette	3	1	\$12.25	\$31,028.00	\$3,500.00
All Safe Industries, Inc.	Jefferson	3	3	\$20.67	\$13,126.00	\$10,500.00
American Tile Company, Inc.	Jefferson	18	2	\$27.65	\$21,201.00	\$7,000.00
American Tire, Inc.	Nelson	17	3	\$20.17	\$15,981.00	\$10,500.00
Anesthesia Health Consultants, LLC	Jefferson	18	4	\$18.13	\$12,689.00	\$12,600.00
Anne-Marie Hogan, CPA, PLLC	Jefferson	1	4	\$19.25	\$19,675.00	\$14,000.00
Associates in Accounting, PSC	Jefferson	10	2	\$19.25	\$8,324.00	\$7,000.00
Aviette BioProcessing, LLC	Simpson	0	1	\$40.86	\$8,250.00	\$3,500.00
Barnes Auto Service Inc.	Jefferson	11	2	\$23.00	\$13,273.00	\$7,000.00
BGS Kentucky, LLC	Fayette	0	1	\$18.27	\$5,057.00	\$3,500.00
Big Jack's Donuts & Coffee, LLC	Anderson	0	1	\$14.47	\$5,273.00	\$3,500.00
Bio-Medical Equipment Service Company	Jefferson	24	5	\$22.32	\$18,315.00	\$17,500.00
Blue Frame Technology LLC	Fayette	16	3	\$26.14	\$10,801.00	\$10,500.00
Blue Frame Technology LLC	Fayette	19	2	\$24.73	\$8,430.00	\$7,000.00
Bluegrass Bean Counter, PLLC	Scott	3	1	\$18.00	\$5,001.00	\$3,500.00
Bluegrass Chiro, PLLC	Boyle	44	5	\$21.07	\$20,825.00	\$17,500.00
Brown & Kubican, P.S.C.	Fayette	19	2	\$29.50	\$8,630.00	\$7,000.00
Busy Bee Occupational Therapy, PLLC	Madison	7	3	\$20.86	\$10,676.00	\$10,500.00
Capital Recovery Group Technologies, LLC	Jefferson	7	8	\$53.25	\$62,633.00	\$25,000.00
CNHC, LLC	Kenton	4	1	\$21.00	\$42,400.00	\$3,500.00
Collier Associates, Inc.	Marshall	8	2	\$40.75	\$15,900.00	\$7,000.00
Collier Electrical Service, Inc.	Marshall	29	3	\$34.48	\$61,860.00	\$10,500.00
Colors Galore, LLC	Jefferson	3	2	\$18.50	\$8,102.00	\$7,000.00
Cornerstone Engineering, Inc.	Jefferson	8	2	\$34.38	\$76,190.00	\$7,000.00
Corvin's Furniture & Carpet, LLC	Nelson	20	1	\$14.68	\$15,200.00	\$3,500.00
Darling State of Mind LLC	Jefferson	1	1	\$15.00	\$5,123.00	\$3,500.00
DawnBland.com, LLC	Breckinridge	3	2	\$13.00	\$8,786.00	\$7,000.00
Diane Goetz Family Practice PLLC	Daviess	1	2	\$17.00	\$7,079.00	\$7,000.00
Ehrlers, Inc.	Jefferson	3	1	\$37.50	\$11,703.00	\$3,500.00
Epiphany Foam Insulation, LLC	Woodford	10	1	\$13.00	\$82,381.00	\$3,500.00
FamilyCare Counseling Solutions LLC	Kenton	5	5	\$20.07	\$16,260.00	\$16,200.00

FWK & Associates PLLC	Fayette	10	2	\$23.50	\$8,887.00	\$7,000.00
Georgetown Auto Sales, Inc.	Scott	3	5	\$38.66	\$17,311.00	\$17,300.00
Gorillashine.com, LLC	Fayette	3	4	\$18.06	\$17,172.00	\$14,000.00
Healthcare Asset Network, Inc.	Jefferson	10	5	\$60.55	\$15,238.00	\$15,200.00
Hometown Concrete, LLC	Boone	12	7	\$25.50	\$81,800.00	\$24,500.00
Hurd Aviation LLC	Fayette	4	3	\$22.28	\$80,998.00	\$10,500.00
Infrastructure Precast, Inc.	Ohio	21	5	\$18.70	\$83,033.00	\$17,500.00
Inside Out Design, LLC	Franklin	6	1	\$13.00	\$24,000.00	\$3,500.00
Insight Automation, Inc.	Boone	11	1	\$96.15	\$5,813.00	\$3,500.00
Integrated Medical Solutions, LLC	Jefferson	22	8	\$45.05	\$27,309.00	\$25,000.00
Janson Communications, LLC	Boyd	24	6	\$22.18	\$41,964.00	\$21,000.00
Johnson Brothers, Incorporated	Fleming	11	2	\$12.00	\$28,900.00	\$7,000.00
Joseph Laratta MD Spine Surgeon, LLC	Jefferson	0	1	\$15.00	\$5,382.00	\$3,500.00
Kentucky Machinery Company, LLC	Madison	8	1	\$36.00	\$171,600.00	\$3,500.00
Lakestone Enterprises, Inc.	Spencer	11	7	\$14.29	\$28,635.00	\$24,500.00
Landworx, LLC	Boone	8	5	\$27.11	\$206,833.00	\$17,500.00
Legion Logistics, LLC	Campbell	16	1	\$21.63	\$5,753.00	\$3,500.00
Lexington Podiatry, PSC	Fayette	30	2	\$15.94	\$24,990.00	\$7,000.00
Louisville Panels, LLC	Jefferson	13	1	\$28.00	\$12,000.00	\$3,500.00
Machine and Components Industries, Inc.	Jefferson	8	4	\$29.48	\$280,000.00	\$14,000.00
Maile Custom Builders, Inc.	Kenton	15	1	\$17.32	\$82,101.00	\$3,500.00
Major Holdings LLC	Jefferson	0	2	\$25.24	\$6,926.00	\$6,900.00
Mark R. Collett, P.S.C.	Kenton	6	1	\$18.00	\$22,900.00	\$3,500.00
Marrillia Interests, LLC	Fayette	23	2	\$31.79	\$45,000.00	\$7,000.00
McCain Bros. Excavating, LLC	Washington	19	3	\$19.33	\$137,000.00	\$10,500.00
McDaniel Financial Services, PLLC	Boyle	7	1	\$27.00	\$7,872.00	\$3,500.00
Mill Ridge Farm, LLLP	Fayette	35	1	\$20.96	\$7,089.00	\$3,500.00
Mizuguchi Plastic Surgery, PLLC	Jefferson	5	1	\$103.00	\$10,000.00	\$3,500.00
Mobile Network Solutions, LLC	Madison	9	5	\$27.16	\$31,961.00	\$17,500.00
Motus Freight, LLC	Campbell	18	4	\$20.01	\$23,305.00	\$14,000.00
Moxie MOD, LLC	McCracken	0	1	\$20.63	\$5,183.00	\$3,500.00
MRCOOL LLC Limited Liability Company	Graves	17	4	\$23.20	\$12,673.00	\$12,600.00
My Office Pro, LLC	Laurel	13	6	\$13.92	\$21,555.00	\$21,000.00
Nuthin' Fancy, Incorporated	Jefferson	0	6	\$20.50	\$19,568.00	\$19,500.00
Optimal Living Services, LLC	Fayette	0	3	\$18.66	\$18,571.00	\$10,500.00
Patterson and Company CPAs PLLC	Jefferson	13	4	\$23.65	\$16,248.00	\$14,000.00
Penn and Son Sheet Metal, Inc.	Marshall	4	2	\$16.50	\$12,090.00	\$7,000.00
Please & Thank You, LLC	Jefferson	12	1	\$15.00	\$5,496.00	\$3,500.00
Premium Delivery, Inc.	Jefferson	12	2	\$17.00	\$57,981.00	\$7,000.00
Puja Mohan, Inc	Warren	0	5	\$13.00	\$29,778.00	\$17,500.00
Pure Blue Pools, LLC	Boone	10	7	\$22.86	\$33,830.00	\$24,500.00
Quantum Ink Company	Jefferson	29	3	\$18.77	\$38,698.00	\$10,500.00

Rad Accessories, LLC	Marshall	2	3	\$23.50	\$14,395.00	\$10,500.00
Revolution Physical Therapy, LLC	Laurel	6	1	\$21.00	\$5,020.00	\$3,500.00
RusTech Admixtures, Inc.	Jefferson	17	1	\$19.46	\$24,230.00	\$3,500.00
Service Specialties, LLC	Clark	10	2	\$25.00	\$9,882.00	\$7,000.00
Service Specialties, LLC	Clark	12	2	\$16.00	\$7,758.00	\$7,000.00
Shiny Nickel, LLC	Jefferson	0	2	\$17.03	\$11,621.00	\$7,000.00
Southern Kentucky Industrial Equipment LLC	Pulaski	3	2	\$16.50	\$29,399.00	\$7,000.00
Strategic Communications, LLC	Jefferson	22	5	\$26.04	\$20,241.00	\$17,500.00
SubsKY Inc.	Woodford	3	2	\$12.77	\$10,000.00	\$7,000.00
Summers, McCrary & Sparks, P.S.C.	Fayette	6	3	\$21.63	\$11,835.00	\$10,500.00
SWS Enterprises, Inc.	Fayette	14	1	\$16.63	\$67,393.00	\$3,500.00
T&L Lawn Care	Boone	5	1	\$11.00	\$11,076.00	\$3,500.00
Technical Horizons, PLLC	Fayette	6	3	\$35.58	\$11,343.00	\$10,500.00
Tellennium, Inc.	Bullitt	37	2	\$42.86	\$7,341.00	\$7,000.00
The Kentucky Life, Inc	Fayette	5	4	\$33.35	\$13,790.00	\$13,700.00
The Speech Path PLLC	Madison	3	3	\$25.25	\$10,509.00	\$10,500.00
The Thomas Firm, PLLC	Jefferson	7	4	\$22.98	\$14,848.00	\$14,000.00
The Thomas Firm, PLLC	Jefferson	11	3	\$21.45	\$15,278.00	\$10,500.00
Thompson Plumbing, LLC	Marshall	2	3	\$26.29	\$41,830.00	\$10,500.00
Traugher Mechanical Services, Inc.	Simpson	38	4	\$20.59	\$20,700.00	\$14,000.00
Tudors East New Circle, LLC	Fayette	0	7	\$18.78	\$78,975.00	\$24,500.00
Vantage Engineering PLC	Mercer	6	2	\$21.58	\$8,345.00	\$7,000.00
Volta Electric, LLC	Boone	8	2	\$15.60	\$32,386.00	\$7,000.00
Volta Inc.	Franklin	25	3	\$27.36	\$36,666.00	\$10,500.00
Volta Inc.	Franklin	28	1	\$21.63	\$5,123.00	\$3,500.00
Wake Cumberland Watersports LLC	Pulaski	0	3	\$15.14	\$15,080.00	\$10,500.00
West Sixth Brewing Company, LLC	Fayette	29	4	\$18.03	\$129,031.00	\$14,000.00
Whitlock, CPA, PLLC	Graves	6	1	\$15.00	\$5,720.00	\$3,500.00
Wilder Iron Works LLC	Campbell	3	2	\$15.00	\$17,350.00	\$7,000.00
Willow Hill Supply, LLC	Clark	2	5	\$13.70	\$67,996.00	\$17,500.00
Winner's Circle Painting, LLC	Jessamine	20	3	\$20.00	\$19,700.00	\$10,500.00
		308			\$3,285,810	\$1,062,400

Appendix G: KSBCI Recipients

Closed	Participating Bank	KSBCI Program	Total Project Amount	KSBCI Support Amount
CKW Physical Therapy, Inc.	Commercial Bank of West Liberty	KYCSP	\$ 272,900.92	\$ 54,580.00
Beaver Creek Vet.	Mountain Association	KYLPP	\$ 410,000.00	\$ 68,000.00
JAKLAK LLC	First Financial Bank	KYLPP	\$ 550,147.16	\$ 106,029.40
DC Logistics, Inc.	United Citizens Bank & Trust	KYCSP	\$ 350,000.00	\$ 18,750.00
Arnett Dental Practice, PLLC/She-lia's Property, LLC	First National Bank of Grayson	KYCSP	\$ 580,000.00	\$ 104,400.00
Prosigns LLC	Mountain Association	KYCSP	\$ 150,000.00	\$ 30,000.00
Print My Threads, LLC	Mountain Association	KYCSP	\$ 230,000.00	\$ 40,000.00
Marshall T. West d/b/a West & Jones Funeral Home	Mountain Association	KYCSP	\$ 225,000.00	\$ 40,000.00
Shooting Star Properties, LLC/Paladin, Inc.	Community Trust Bank	KYCSP	\$ 705,000.00	\$ 40,125.00
Miles Exterminating Co., Inc.	First National Bank of Grayson	KYCSP	\$ 80,000.00	\$ 16,000.00
Phillips Diversified Manufacturing, Inc.	KHIC	KYCSP	\$ 1,200,000.00	\$ 240,000.00
Grace Community Health Center	Forcht Bank	KYCSP	\$ 600,000.00	\$ 99,000.00
Carey Technologies, Inc. dba Pine Mountain Canopy Tours	KHIC	KYCSP	\$ 550,000.00	\$ 50,000.00
Frontier Veterinary Services, LLC	United Southern Bank	KYCSP	\$ 300,000.00	\$ 37,498.55
Christian Academy of Lawrenceburg, Kentucky, Inc.	First Financial Bank	KYCSP	\$ 707,000.00	\$ 131,400.00
Posh Academy, LLC	Paducah Bank & Trust	KYCSP	\$ 358,250.00	\$ 49,000.00
Stapleton Holdings, LLC	First Financial Bank	KYCSP	\$ 457,000.00	\$ 91,400.00
Bluegrass Tool & Industrial, LLC	First Security Bankk	KYCSP	\$ 1,250,000.00	\$ 250,000.00
Julep Pets, Inc.	Kentucky Bank	KYCSP	\$ 155,000.00	\$ 23,250.00
Quality Tire & Access, Inc.	SKED	KYCSP	\$ 150,000.00	\$ 22,500.00
M & M Newspapers, LLC	Traditional Bank	KYCSP	\$ 500,000.00	\$ 90,000.00
Two Martini's LLC	Community Ventures Corporation	KYCSP	\$ 540,027.00	\$ 37,801.00
Critchfield Meats, Inc.	Traditional Bank	KYCSP	\$ 1,607,905.79	\$ 211,543.20
Howard Law Firm, PLC	KHIC	KYCSP	\$ 250,000.00	\$ 10,000.00
PMAK, LLC (project #1)	Fifth Third Bank	KYCSP	\$ 725,000.00	\$ 72,500.00
KJKJ, LLC	Fifth Third Bank	KYCSP	\$ 578,106.63	\$ 91,306.00
Mahalaxmi Host, LLC and Radha Ventures, LLC	Traditional Bank	KYCSP	\$ 1,250,000.00	\$ 250,000.00
Hicks-Blaydes Farm, LLC	Kentucky Bank	KYCSP	\$ 600,913.40	\$ 58,930.00
Affordable Signs & Apparel, LLC	United Citizens Bank & Trust	KYCSP	\$ 48,000.00	\$ 9,000.00
McClure's Auto Parts, Inc.	Mountain Association	KYCSP	\$ 560,000.00	\$ 112,000.00
High Performance Computer Services LLC	Citizens Bank of Kentucky, Inc.	KYCSP	\$ 338,080.00	\$ 62,500.00
Mirissia Duncil and Miles Duncil	First National Bank of Grayson	KYCSP	\$ 205,000.00	\$ 41,000.00
RHLasher/BGC Properties, LLC (The Big Green Cow, Inc.)		KYCSP	\$ 1,322,840.00	\$ 132,284.00

DHN Midland, LLC First Harrison Bank	Traditional Bank	KYCSP	\$ 1,167,500.00	\$ 225,000.00
Logan Corporation	SKED	KYCSP	\$ 575,000.00	\$ 80,000.00
GBC Enterprises, LLC	Republic Bank & Trust	KYCSP	\$ 2,822,500.00	\$ 360,000.00
Addiction Recovery Care, LLC (project #1)	Mountain Association	KYCSP	\$ 150,000.00	\$ 16,000.00
5454 LLC	First Harrison Bank	KYCSP	\$ 144,100.00	\$ 15,851.00
Faith Holdings LLC	First Harrison Bank	KYCSP	\$ 3,120,000.00	\$ 456,000.00
SNEAK Properties, LLC	Stock Yards Bank	KYCSP	\$ 4,200,000.00	\$ 798,000.00
Drs. Burch, Renshaw, Wix & Associates, P.S.C.	Republic Bank & Trust	KYCSP	\$ 1,907,637.00	\$ 250,000.00
Crum Funeral Home LLC	Citizens Bank of Kentucky, Inc.	KYCSP	\$ 750,000.00	\$ 150,000.00
East End Foot, LLC	First Harrison Bank	KYCSP	\$ 615,000.00	\$ 108,309.00
Zinky's Dog Care, LLC	Citizens First Bank	KYCSP	\$ 189,230.00	\$ 37,000.00
May and Lee Management, LLC	Citizens Bank of Kentucky, Inc.	KYCSP	\$ 1,100,000.00	\$ 220,000.00
Addiction Recovery Care, LLC (project #2)	Mountain Association	KYCSP	\$ 500,000.00	\$ 100,000.00
AAA CNC Milling Center LLC	First Harrison Bank	KYCSP	\$ 330,000.00	\$ 36,000.00
True North Properties, LLC	Fifth Third Bank	KYCSP	\$ 120,000.00	\$ 24,000.00
PEARCE Group LLC	Fifth Third Bank	KYCSP	\$ 230,000.00	\$ 46,000.00
Wente Holdings, LLC	Citizens Bank of Kentucky, Inc.	KYCSP	\$ 845,953.00	\$ 169,190.00
Highland Property Group LLC	Fifth Third Bank	KYCSP	\$ 1,400,000.00	\$ 200,000.00
AEK Transport Services LLC	Community Ventures Corporation	KYCSP	\$ 85,000.00	\$ 17,000.00
Capitol Brewing Company, PBC	Traditional Bank	KYCSP	\$ 130,000.00	\$ 26,000.00
F&B Properties LLC	Traditional Bank	KYCSP	\$ 1,600,000.00	\$ 142,500.00
Affordable Granite & Marble Co. LLC	First Harrison Bank	KYCSP	\$ 230,000.00	\$ 45,000.00
PMAK, LLC (project #3)	Fifth Third Bank	KYCSP	\$ 624,500.00	\$ 62,450.00
Sav's Grill, LLC	Traditional Bank	KYCSP	\$ 525,000.00	\$ 96,200.00
Pearly Gates JV L.L.C.	First Harrison Bank	KYCSP	\$ 939,964.00	\$ 120,000.00
Unstoppable Faith LLC	First Harrison Bank	KYCSP	\$ 843,755.00	\$ 166,751.00
Parker Farm Supply, LLC	United Citizens Bank & Trust	KYCSP	\$ 472,000.00	\$ 25,400.00
OC Brannon Crossing, LLC	Fifth Third Bank	KYCSP	\$ 1,500,000.00	\$ 150,000.00
153 LLC	First Harrison Bank	KYCSP	\$ 496,764.00	\$ 97,853.00
Green Solutions Landcare, LLC	Monticello Banking Company	KYCSP	\$ 1,309,000.00	\$ 250,000.00
340 North Buckman, LLC (Pink Door Wreaths)	First Harrison Bank	KYCSP	\$ 726,400.00	\$ 127,000.00
BlueGrass Taproot, LLC	First Harrison Bank	KYCSP	\$ 786,150.00	\$ 135,000.00
PJJAM Enterprises, Inc. (real estate loan)	Stock Yards Bank & Trust	KYCSP	\$ 450,000.00	\$ 90,000.00
PJJAM Enterprises, Inc. (equipment loan)	Stock Yards Bank & Trust	KYCSP	\$ 1,250,000.00	\$ 250,000.00
TS Montgomery, LLC	Traditional Bank	KYCSP	\$ 623,560.00	\$ 104,968.00
Eliezer Transport, Inc.	South Central Bank	KYCSP	\$ 465,506.12	\$ 93,101.00
Thind & Manak Investment, LLC	Traditional Bank	KYCSP	\$2,630,908.00	\$396,082.00

DE/TAC Properties Limited Liability Partnership	Commercial Bank	KYCSP	\$210,000.00	\$26,350.00
Still Lake Properties I, LLC (real estate)	South Central Bank	KYCSP	\$712,500.00	\$135,000.00
Still Lake Properties I, LLC (equipment)	South Central Bank	KYCSP	\$187,500.00	\$30,000.00
TJ Dillow Properties LLC	Citizens Bank of Kentucky, Inc	KYCSP\$	1,000,000.00	\$90,000.00
Total Closed Funds			\$55,771,598.02	\$ 8,658,802.15

Paid Off/Recyclable Funds				
NucSafe, Inc. / NucSafe Instruments, Inc.	SKED	KYCSP	\$ 2,000,000.00	\$ 100,000.00
M&M Partners (project #2)	Community Trust Bank	KYCSP	\$ 51,442.00	\$ 10,000.00
Eastern Telephone & Technologies	Mountain Association	KYCSP	\$ 275,000.00	\$ 9,500.00
OB Holdings, LLC (Ocean Breeze)	Community Trust Bank	KYCSP	\$ 386,086.50	\$ 47,250.00
The RF Group, LLC DBA Simply the Best Sports Bar & Grill	The Commercial Bank of Grayson	KYCSP	\$ 151,274.27	\$ 30,000.00
Indatus	PNC Bank	KYCSP	\$ 8,700,000.00	\$1,000,000.00
Sunny Deals, LLC	First Financial Bank	KYCSP	\$ 25,000.00	\$ 5,000.00
Wreck-A-Mend Auto Restoration, LLC	United Southern Bank	KYCSP	\$ 94,500.00	\$ 14,250.00
Vest Fabrication & Certified Welding, LLC	Kentucky Bank	KYCSP	\$ 40,000.00	\$ 4,000.00
Grace Coffee, Café, Bakery, LLC	Community Ventures Corporation	KYCSP	\$ 75,000.00	\$ 15,000.00
Land of Tomorrow Productions, LLC	South Central Bank	KYCSP		\$ 326.05
Lincoln Manufacturing USA, LLC	Commercial Bank	KYCSP	\$ 7,245,000.00	\$ 449,000.00
Lincoln Manufacturing USA, LLC	Commercial Bank	KYCSP	\$ 2,800,000.00	\$ 280,000.00
H & S Distributing, LLC	Wilson & Muir Bank & Trust Co.	KYCSP	\$ 104,000.00	\$ 19,400.00
BCM JR WR LLC/Elevation Management Group, LLC	United Southern Bank	KYCSP	\$ 480,000.00	\$ 96,000.00
J and L Lyle, Inc. Project #2	Kentucky Bank	KYCSP	\$ 29,000.00	\$ 5,220.00
Carnage Outdoor Gear, LLC	Paducah Bank & Trust	KYCSP	\$ 90,522.00	\$ 18,000.00
K&G Bear Creek Retreat/Montgomery Wildness/KY Antler	Kentucky Farmers Bank	KYCSP		\$ 11,582.47
Tim and Bonita Butler	Citizens First Bank	KYCSP	\$ 140,000.00	\$ 26,000.00
ROR, LLC/Stepping Stones For Children, Inc.	Kentucky Bank	KYCSP		\$ 151,969.11
Maynard Studios	Community Trust Bank	KYCSP	\$ 165,750.00	\$ 24,862.50
Benjamin Watts/William & Kathy Watts/Wattsy's House of Iron	United Citizens Bank & Trust	KYCSP	\$ 50,000.00	\$ 10,000.00
J and L Lyle, Inc. Project #1	Kentucky Bank	KYCSP	\$ 35,000.00	\$ 6,300.00
Fit Bodies, Inc.	Fifth Third Bank	KYCSP	\$ 211,000.00	\$ 26,954.00
Big Red Burritos, LLC	Fifth Third Bank	KYCSP	\$ 25,000.00	\$ 5,000.00

Walnut Specialists Incorporated	KHIC	KYCSP	\$ 150,000.00	\$ 30,000.00
JSB Industrial Solutions, Inc.	Mountain Association	KYCSP	\$ 550,000.00	\$ 50,000.00
Lee's Ford Wine & Spirit Shoppe, LLC	Community Trust Bank	KYCSP	\$ 350,000.00	\$ 70,000.00
Palate Restaurant Group, LLC	Traditional Bank	KYCSP	\$ 1,175,000.00	\$ 120,000.00
Grace Community Health Center	Forcht Bank	KYCSP		\$ 21,000.00
Geoffrey & Angel Knight/Knights Transportation Services	South Central Bank	KYCSP	\$ 225,000.00	\$ 45,000.00
H.B. Molding	Huntington Bank	KYCAP	\$ 40,000.00	\$ 1,200.00
Skidaddles, Inc.	Huntington National	KYCAP	\$ 65,306.12	\$ 1,902.12
LES Workout, LLC	Citizens First Bank	KYCSP	\$ 1,098,920.00	\$ 49,672.00
JC Brewer Construction, Inc.	Citizens First Bank	KYCSP	\$ 251,200.00	\$ 50,000.00
Clark County Veterinary Clinic, INC, Jeff and Kim Castle	Kentucky Bank	KYCSP	\$ 680,823.58	\$ 24,800.00
Austin Enterprises Incorporated	Kentucky Bank	KYCSP	\$ 242,000.00	\$ 48,400.00
HC Matthews	Citizens First Bank	KYCSP	\$ 444,900.00	\$ 69,101.00
212 Wayne Drive LLC, dba LaFontaine Preparatory School, LLC	Mountain Association	KYCSP	\$ 355,000.00	\$ 69,000.00
All Type Supply, LLC	Citizens Deposit Bank	KYCSP	\$ 181,868.00	\$ 36,000.00
CGS Machine & Tool, Inc.	Franklin Bank & Trust Company	KYCSP	\$ 1,440,000.00	\$ 248,000.00
Stardust Holdings, LLC & Stardust Ventures, LLC	KHIC	KYCSP	\$ 1,800,000.00	\$ 250,000.00
Godi Corporation	Fifth Third Bank	KYCSP	\$ 908,000.00	\$ 60,000.00
Cosmic Cheer and Tumble LLC	First National Bank of Grayson	KYCSP	\$ 239,000.00	\$ 29,850.00
Superior Expeditors LLC (project #1)	SKED	KYCSP	\$ 75,000.00	\$ 13,800.00
AU Associates, Inc.	Community Ventures Corporation	KYCSP	\$ 471,919.11	\$ 45,855.00
Eastman Law Office, PSC	First Financial Bank	KYCSP	\$ 91,000.00	\$ 18,200.00
Mountain Music Exchange, LLC	Mountain Association	KYCSP	\$ 50,000.00	\$ 10,000.00
J & H Mcglone LLC dba Kees Farm Services & Supply, LLC - project #1	First National Bank of Grayson	KYCSP	\$ 366,000.00	\$ 26,700.00
J & H Mcglone LLC dba Kees Farm Services & Supply, LLC - project #2	First National Bank of Grayson	KYCSP	\$ 50,000.00	\$ 10,000.00
Empress Properties, LLC	Republic Bank & Trust	KYCSP	\$ 1,200,000.00	\$ 150,000.00
D & M Contracting, Inc.	Mountain Association	KYCSP	\$ 100,000.00	\$ 16,000.00
Tilted Tulip, LLC	Mountain Association	KYCSP	\$ 305,000.00	\$ 49,000.00
Purley Enterprises, Inc. (project #1)	Kentucky Bank	KYCSP	\$ 147,500.00	\$ 29,500.00
Purley Enterprises, Inc. (project #2)	Kentucky Bank	KYCSP	\$ 317,355.00	\$ 57,471.00
Miller Insulation, LLC/Andrew & Eli Miller	South Central Bank of Hardin County, Inc.	KYLPP	\$ 85,000.00	\$ 17,000.00
My Visual Package, LLC	South Central Bank	KYCSP	\$ 30,000.00	\$ 3,000.00
Paducah Pizza Bakers, LLC	Paducah Bank & Trust	KYCSP	\$ 1,660,000.00	\$ 132,800.00
Country Boy Brewing, LLC & CBB Properties, LLC (construction loan)	Traditional Bank	KYCSP	\$ 2,950,000.00	\$ 250,000.00
G&M Investments, LLC	Paducah Bank & Trust	KYCSP	\$ 350,000.00	\$ 35,000.00
Best Tyler, LLC	Wilson & Muir Bank & Trust Co.	KYCSP	\$ 279,000.00	\$ 48,000.00

Mike Combs, Inc. dba Concrete Craft of Lexington	Community Ventures Corporation	KYCSP	\$ 20,000.00	\$ 4,000.00
Auto Wash USA, LLC	Whitaker Bank	KYCSP	\$ 1,331,688.00	\$ 60,000.00
Hospitality Resources, LLC	United Cumberland Bank	KYCSP	\$ 5,705,000.00	\$ 342,300.00
Women First, PLLC	First National Bank of Grayson	KYCSP	\$ 335,000.00	\$ 67,000.00
Durbin Super Bowl, LLC	Fifth Third Bank	KYCSP	\$ 2,125,000.00	\$ 285,000.00
Invictus 2468, LLC	Fifth Third Bank	KYCSP	\$ 875,000.00	\$ 175,000.00
breathe, LLC	Community Ventures Corporation	KYCSP	\$ 57,000.00	\$ 10,000.00
M&M Partners (project #1)	Community Trust Bank	KYCSP	\$ 95,612.00	\$ 18,800.00
Trackside Butcher Shoppe, LLC - Request #1	United Citizens Bank & Trust	KYCSP	\$ 50,000.00	\$ 10,000.00
Steamer Seafood Concessions & Catering, LLC	Franklin Bank & Trust Company	KYCSP		\$ 7,974.97
Land Shark Shredding, LLC (Project #1)	Franklin Bank & Trust Company	KYCSP	\$ 455,000.00	\$ 91,000.00
Land Shark Shredding, LLC (Project #2)	Franklin Bank & Trust Company	KYCSP	\$ 120,000.00	\$ 24,000.00
S & K Farms LLC/S & K Powder Coating, LLC	Franklin Bank & Trust Company	KYCSP	\$ 203,133.00	\$ 40,000.00
Bader's Food Mart, Inc.	First Financial Bank	KYCSP	\$ 286,000.00	\$ 57,200.00
Latonia Star, LLC (project #1)	First Financial Bank	KYCSP	\$ 548,000.00	\$ 45,000.00
Latonia Star, LLC (project #2)	First Financial Bank	KYCSP	\$ 40,000.00	\$ 8,000.00
ROR, LLC/Stepping Stones For Children, Inc.	Kentucky Bank	KYCSP	\$ 1,300,000.00	\$ 98,030.89
Dalton Development Company Limited Liability Company (project #1)	Fifth Third Bank	KYCSP	\$ 243,000.00	\$ 27,000.00
Hildreth Brothers, LLC	Franklin Bank & Trust Company	KYCSP	\$ 400,000.00	\$ 80,000.00
Michael A. Green and Vipavee T. Green (Crank and Boom)	Community Ventures Corporation	KYCSP	\$ 410,500.00	\$ 33,656.00
RuffleGirl Inc.	First Harrison Bank	KYCSP	\$ 1,450,000.00	\$ 290,000.00
CFO Advantage, LLC - Travel Guide - Kentucky	First Financial Bank	KYCSP	\$ 99,086.76	\$ 19,817.35
Marikka's Restaurant, Inc.	Traditional Bank	KYCSP	\$ 3,641,565.00	\$ 461,140.00
Steamer's Seafood Bowling Green LLC	Franklin Bank & Trust Company	KYCSP	\$ 700,000.00	\$ 100,000.00
Trackside Butcher Shoppe, LLC - Request #2	United Citizens Bank & Trust	KYCSP	\$ 376,000.00	\$ 75,200.00
Optimum Fitness, LLC	United Citizens Bank & Trust	KYCSP	\$ 50,000.00	\$ 10,000.00
Ruby Concrete, Inc.	Farmers Bank of Marion	KYLPP	\$ 5,675,000.00	\$ 80,000.00
Discernity, LLC	First Financial Bank	KYCSP	\$ 100,000.00	\$ 20,000.00
Gaunce's Café and Deli LLC	Kentucky Bank	KYCSP	\$ 200,000.00	\$ 28,000.00
Parkview Pharmacy, Inc.	Citizens Bank of Kentucky, Inc.	KYCSP	\$ 260,000.00	\$ 52,000.00
Bradley Ebelhar and Angela Ebelhar dba The Crowne	Community Ventures Corporation	KYCSP	\$ 435,000.00	\$ 27,000.00
TVC Holdings LLC	First Harrison Bank	KYCSP	\$ 610,000.00	\$ 120,000.00
Canewood Homeowners Association, Inc. & Canewood HOA GC, LLC	Kentucky Bank	KYCSP	\$ 1,230,000.00	\$ 184,500.00
Atlas Development Group, LLC	First Citizens Bank	KYCSP	\$ 2,590,000.00	\$ 440,000.00

Nicholas D. Ring & Maren B. Ring / Rotolamento Forno LLC	Kentucky Bank	KYCSP	\$ 95,000.00	\$ 10,500.00
Casey's Foods, Inc. dba Happy IGA	Mountain Association	KYCSP	\$ 176,610.00	\$ 34,800.00
HRS Brooks, Inc.	First Citizens Bank	KYCSP	\$ 4,364,000.00	\$ 450,000.00
Malibu Jack's 2, LLC	Community Ventures Corporation	KYCSP	\$ 1,604,500.00	\$ 60,000.00
Taylor Tot Child Center, Inc.	Community Ventures Corporation	KYCSP	\$ 177,110.00	\$ 15,750.00
Dalton Development Company Limited Liability Company (project #2)	Fifth Third Bank	KYCSP	\$ 375,208.00	\$ 75,041.60
Dalton Development Company Limited Liability Company (project #3)	Fifth Third Bank	KYCSP	\$ 338,500.00	\$ 67,700.00
Parker Lilly Holdings, LLC	Fifth Third Bank	KYCSP	\$ 690,000.00	\$ 69,000.00
Wellness Care, LLC	Fifth Third Bank	KYCSP	\$ 470,000.00	\$ 70,500.00
Kentucky River Community Care, Inc. (project #1)	Citizens Bank of Kentucky, Inc.	KYCSP	\$ 525,000.00	\$ 105,000.00
The Law Offices of John Thompson, PLLC	Citizens Bank of Kentucky, Inc.	KYCSP	\$ 78,662.00	\$ 15,732.00
Kentucky River Community Care, Inc. (project #3)	Citizens Bank of Kentucky, Inc.	KYCSP	\$ 673,000.00	\$ 134,600.00
Eddie Eugene Shelton and Charlotte Shelton	Citizens Bank of Kentucky, Inc.	KYCSP	\$ 149,000.00	\$ 29,800.00
Sterling Physical Therapy & Associates, P.S.C.	The Citizens Bank	KYCSP	\$ 467,000.00	\$ 75,000.00
Alley Land Company	Citizens Bank of Kentucky, Inc.	KYCSP	\$ 768,000.00	\$ 88,200.00
B & B Contracting, LLC	Mountain Association	KYCSP	\$ 100,000.00	\$ 20,000.00
Double D's Ice Cream Distribution, Inc.	Cumberland Valley National Bank	KYCSP	\$ 505,354.00	\$ 85,424.00
Burgess Steel Services, Inc.	Citizens Deposit Bank	KYCSP	\$ 75,173.47	\$ 14,000.00
FireFresh Bar-B-Q, Blakenbaker, LLC	First Financial Bank	KYCSP	\$ 175,000.00	\$ 26,250.00
Country Boy Brewing, LLC & CBB Properties, LLC (equipment loan)	Traditional Bank	KYCSP	\$ 2,997,438.00	\$ 346,716.00
Miracle Lawn and Landscaping, Inc.	KHIC	KYCSP	\$ 150,000.00	\$ 25,600.00
Hillview Property Management, LLC	German American Bank	KYCSP	\$ 488,000.00	\$ 96,000.00
America's Finest Filters, Inc.	First Financial Bank	KYCSP	\$ 170,500.00	\$ 34,100.00
Miles Away, Inc.	Community Ventures Corporation	KYCSP	\$ 290,000.00	\$ 10,000.00
Against The Grain, LLC	Wilson & Muir Bank & Trust Co.	KYCSP	\$ 1,100,000.00	\$ 200,000.00
BBY Management Group LLC	Traditional Bank	KYCSP	\$ 2,017,000.00	\$ 188,000.00
Lee's Ford Dock, Inc.	Community Trust Bank	KYCSP	\$ 974,000.00	\$ 194,800.00
Kenneth A Bell, Inc.	Fifth Third Bank	KYCSP	\$ 334,988.36	\$ 66,997.00
Kentucky River Community Care, Inc. (project # 3)	Citizens Bank of Kentucky, Inc.	KYCSP	\$ 1,000,000.00	\$ 200,000.00
Downtown Fitness Paducah, LLC	Community Financial Services Bank	KYCSP	\$ 468,230.78	\$ 88,000.00
Cane Run Properties, LLC	First Financial Bank	KYCSP	\$ 285,000.00	\$ 57,000.00
The B Hive Child Care Academy Limited Liability Company	United Citizens Bank & Trust	KYCSP	\$ 97,380.00	\$ 9,738.00

Kentucky Rural Health Information Technology Network, Inc. (dba Horizon Health)	Forcht Bank	KYCSP	\$ 50,000.00	\$ 10,000.00
Whitaker Group, LLC (project #1)	Mountain Association	KYCSP	\$ 175,000.00	\$ 35,000.00
Whitaker Group II, LLC (project #1)	Mountain Association	KYCSP	\$ 175,000.00	\$ 35,000.00
Whitaker Group, LLC (project #1)	Mountain Association	KYCSP	\$ 655,000.00	\$ 105,000.00
Whitaker Group II, LLC (project #2)	Mountain Association	KYCSP	\$ 262,000.00	\$ 52,400.00
BWH Land Company, LLC	Citizens Bank of Kentucky, Inc.	KYCSP	\$ 205,000.00	\$ 41,000.00
Tackett Enterprises, LLC	Citizens Bank of Kentucky, Inc.	KYCSP	\$ 232,000.00	\$ 46,400.00
Christon Enterprises, Inc. d/b/a Isom IGA	Mountain Association	KYCSP	\$ 468,000.00	\$ 83,600.00
Heritage Millworks, LLC d/b/a Powell Valley Millwork	Mountain Association	KYCSP	\$ 425,000.00	\$ 80,000.00
Heritage Millworks, LLC	Mountain Association	KYCSP	\$ 4,500,000.00	\$ 150,000.00
Hopland Ventures, LLC	South Central Bank	KYCSP	\$ 99,000.00	\$ 15,600.00
Whitaker Group, LLC	KHIC	KYCSP	\$ 270,000.00	\$ 54,000.00
Whitaker Group II, LLC	KHIC	KYCSP	\$ 5,535,000.00	\$ 108,000.00
Cunningham Golf Car Co., Inc.	First Financial Bank	KYCSP	\$ 700,000.00	\$ 140,000.00
Philip Sharp LLC	Citizens Bank of Kentucky, Inc.	KYCSP	\$ 300,000.00	\$ 53,000.00
Starlite, LLC	Kentucky Bank	KYCSP	\$ 1,777,000.00	\$ 250,000.00
Narrow Gate Properties, LLC	Fifth Third Bank	KYCSP	\$ 3,625,000.00	\$ 360,000.00
Robert Leon Allen	Monticello Banking Company	KYCSP	\$ 87,500.00	\$ 17,500.00
Great Flood Holdings, LLC	Republic Bank & Trust	KYCSP	\$ 500,000.00	\$ 100,000.00
Library Holdings, LLC	Fifth Third Bank	KYCSP	\$ 2,530,000.00	\$ 249,000.00
Total Paid Off/Recyclable Funds			\$118,665,105.95	\$ 12,893,233.06

Transfer of Paid Off/Recyclable Funds

KEDFA Grant Program	\$1,330,000.00
Total	\$1,330,000.00

Claims Paid

Land of Tomorrow Productions, LLC	South Central Bank	KYCSP	\$250,000.00	\$49,673.95
K&G Bear Creek Retreat/Montgomery Wildness/ KY Antler	Kentucky Farmers Bank	KYCSP	\$3,353,745.85	\$388,417.53
Steamer Seafood Concessions & Catering, LLC	Franklin Bank & Trust Company	KYCSP	\$148,000.00	\$12,025.03
B&D Cleaning, LLC	Community Ventures Corporation	KYCSP	\$37,500.00	\$7,500.00
Total Claims Paid			\$3,789,245.85	\$22,009,651.72

Approved

Total Closed, Paid Off/Recyclable, Claims Paid & Approved	\$ 178,225,949.82	\$21,129,150.72
--	--------------------------	------------------------

Appendix H: KSFTC Recipients

Name	County	Final Total Estimated Costs	Final Incentive Amount
Andrew T. England and Melanie England	Daviess	\$650,000.00	\$25,000.00
Bonita Jolly	Hardin	\$658,018.00	\$25,000.00
Larry Swetnam, Edith Swetnam and Jo Ann Swetnam	Fayette	\$1,060,000.00	\$25,000.00
Robert H. Foree & Jean L. Foree	Shelby	\$588,000.00	\$25,000.00
Grand Totals		\$2,956,018.00	\$100,000.00